

2024 E/S 2



www.hjsensor.cn

南京航伽电子科技有限公司

Nanjing Hangjia Electronic Technology Co., Ltd.

地址: 南京市雨花经济开发区凤华路18号

Address: No.18, Fenghua Road, Yuhua Zone, Nanjing, China

邮编/P.C.: 210096

电话/Tel: +86(0)25 85897760

传真/Fax: +86(0)25 85897760

热线/Hotline: 400 855 6108

销售/Sales: +86 (0)25 66090018

技术/Tech.: +86 (0)25 66090058

手机/Mobile: +86 18651815588

邮箱/E-mail: hjkj@hjsensor.cn

网站/Web: www.hjsensor.cn

工业传感器选型手册

INDUSTRIAL SENSOR SELECTION MANUAL

HIGHJOIN
航伽科技



HIGHJOIN
航伽科技

Specialized in
Automation for 15 years

专注自动化15年

企业简介 ABOUT US



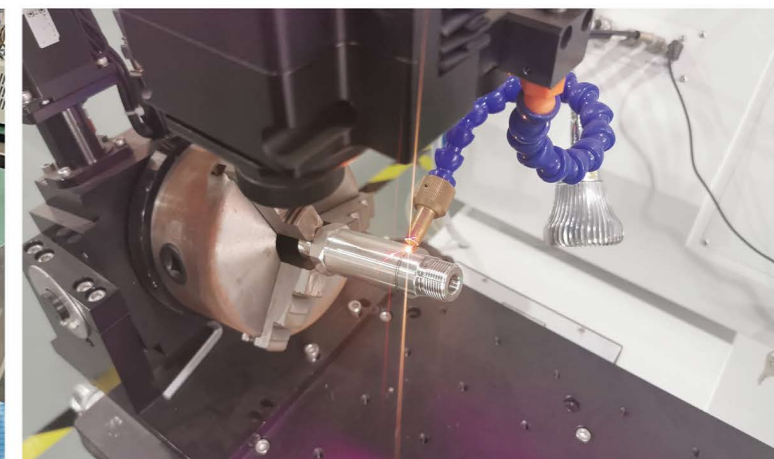
航伽科技是一家中美合资的国家高新技术企业和双软企业。集团总部与设计中心位于美国科罗拉多，并在中国南京和中国深圳设有研发与制造基地。公司专注于各类传感器，测控系统及物联网的研发、生产、销售和服务。公司坚持专业化、定制化、智能化的产品理念，从技术咨询、专业化定制到最终按需量产，帮助客户优化工艺过程，创造和传递价值。

我们一直坚持以技术领先和智造工艺为核心竞争力，每个产品都经过自动线性校准来确保产品精度，自动温度补偿来确保宽温特性，实时老化记录和分析来确保时漂性能，压力循环冲击测试来确保长期稳定性。我们从可靠性、安全性、专业性和高效性方面出发，与工程机械、水处理、食品医药、环保、电力、冶金、造船等众多领域的客户保持密切合作。

Hangjia Technology is a Sino-US Joint Venture company, also with hi-tech enterprise qualification and Software enterprise & Software product certification. Head quarter of the company is located in Colorado, US. Developing and manufacturing center is in Nanjing and Shenzhen, China. We focus on the development, manufacture and service of sensors, transmitter and IOT. Our product idea is professionalization, customization and intelligentization, helping customer optimize process and create values from technology consulting and customized production.

Leading technology and intelligent manufacture are the core competence of the company. Each product delivered to customer is processed through automatic temperature compensation, linear calibration, aging testing and rounds of pressure testing, to ensure temperature characteristic, accuracy, deviation and stability. We are working closely with customers of engineer machine, water treatment, food & drug industry, environmental protection, power enterprise, metallurgy industry, shipbuilding and so on.

公司一瞥 Company Views

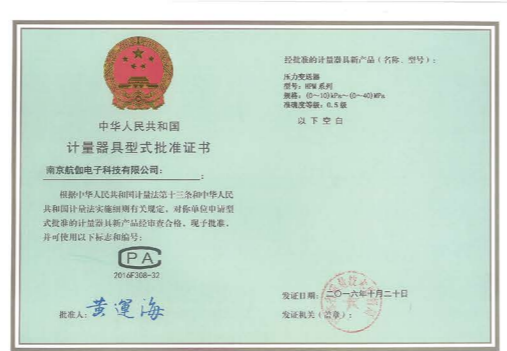


“荣誉和资质”

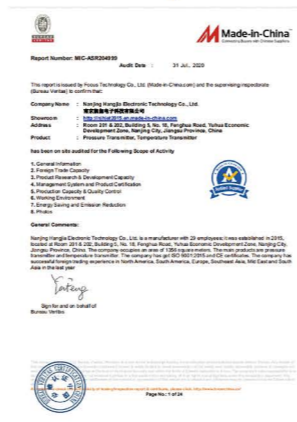
Honors and Qualifications



型式批准证书及制造许可认证



质量管理体系及工厂认证



CE认证



防爆证书

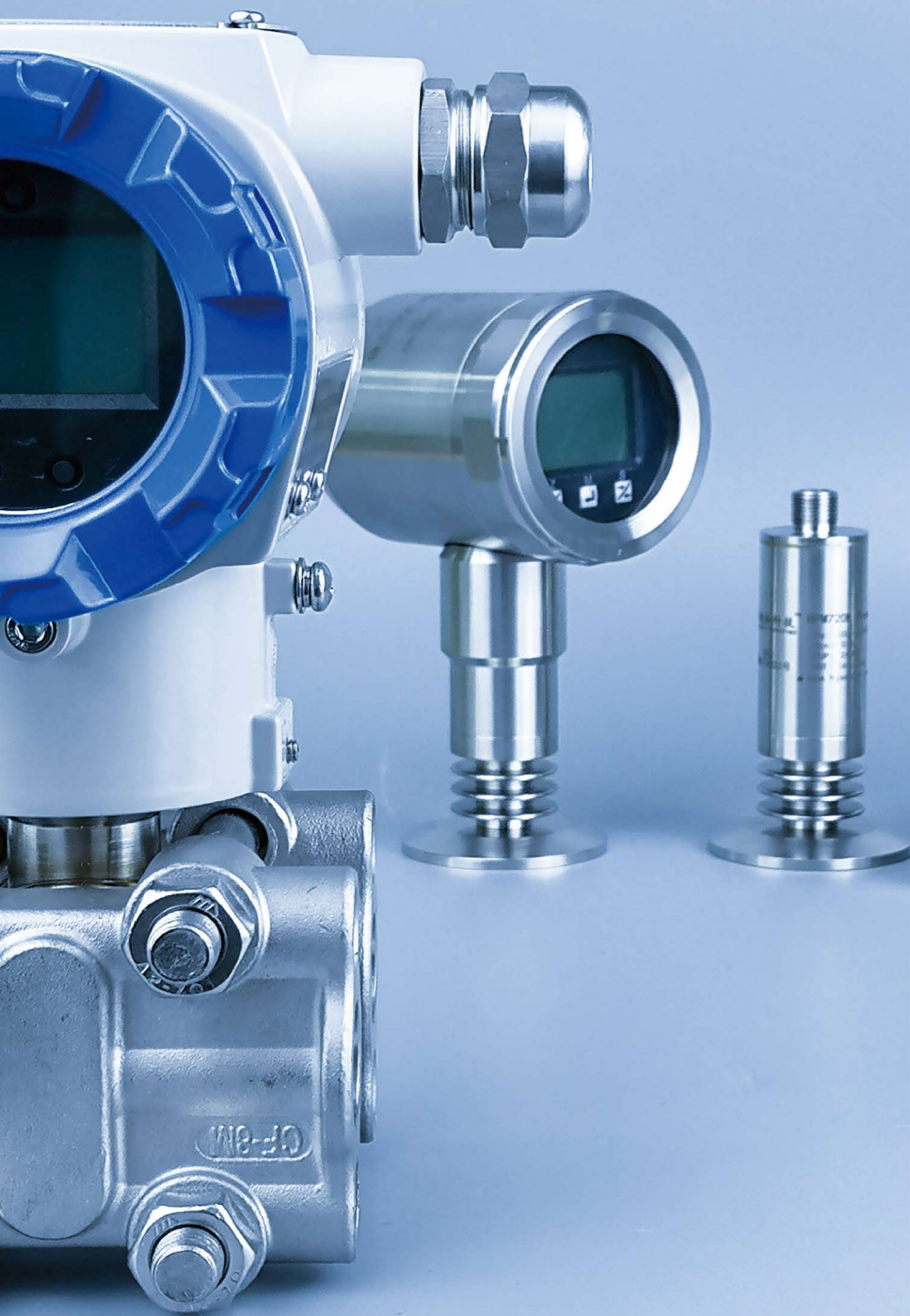


发明专利及知识产权



CNAS证书





HIGHJOIN

HIGHJOIN

目录 | Catalog

压力 Pressure		压力传感器 Pressure Sensor	07
压力 Pressure		高精度智能型压力变送器 High-precision Intelligent Pressure Transmitter	10
压力 Pressure		投入式液位变送器 Submersible Level Transmitter	11
压力 Pressure		卫生型压力变送器 Hygienic Pressure Transmitter	15
压力 Pressure		工业型压力变送器 Industrial Pressure Transmitter	17
压力 Pressure		防护型压力变送器 Protective Pressure Transmitter	23
压力 Pressure		开关控制 Pressure Switch	25
压力 Pressure		高频压力传感器 High-frequency Pressure Sensor	27
压力 Pressure		低功耗压力传感器 Low-power Consumption Pressure sensor	29
压力 Pressure		差压变送器 Differential Pressure Transmitter	31
压力 Pressure		温压一体 Temperature And Pressure Integrated	32
温度 Temperature		温度变送器 Temperature Transmitter	33
流量 Flow		流量计 Flowmeter	35
物位 Level		物位计 Level Meter	37
振动 Vibration		速度和加速度传感器 Velocity Sensor and Acceleration Sensor	40
二次仪表 Secondary Instrument		二次仪表 Secondary Instrument	41
其他 Others		其他 Others	42

性能指标 Performance



HP10硅压阻压力传感器/HP10 Silicon Piezoresistive Pressure Sensor

量程范围/Pressure Range: -100kPa~0~10kPa~100MPa
 压力类型/Pressure Type: 表压/Gauge, 绝压/Absolute, 密封表压/Sealed
 激励/Supply: 恒流1.5mA/Constant Current 1.5mA
 零点输出/Zero Output: ± 1 mVDC(典型/Typical)
 满量程输出/Full Scale Output: 90mVDC(典型/Typical)
 补偿温度/Compensation Temperature: -10°C~70°C
 非线性/Nonlinearity: $\pm 0.2\%$ FS(典型/Typical)
 长期稳定性/Long-term Stability: $\pm 0.2\%$ FS(典型/Typical)



HP10M硅压阻压力传感器模块/HP10M Silicon Piezoresistive Pressure Sensor Module

量程范围/Pressure Range: -100kPa~0~10kPa~100MPa
 压力类型/Pressure Type: 表压/Gauge, 绝压/Absolute, 密封表压/Sealed
 供电/Supply: 24VDC
 输出/Output: 4~20mADC, 0/1~5VDC, 0/1~10VDC等/etc
 补偿温度/Compensation Temperature: -10°C~70°C
 精度/Accuracy: $\pm 0.5\%$ FS(典型/Typical), $\pm 0.25\%$ FS(可选/Optional)
 长期稳定性/Long-term Stability: $\pm 0.2\%$ (典型/Typical)
 尺寸/Size: $\Phi 19$ mm



HP12螺纹型纯平膜压力传感器/HP12 Screw Type Flat Film Pressure Sensor

量程范围/Pressure Range: -100kPa~0~20kPa~60MPa
 压力类型/Pressure Type: 表压/Gauge, 绝压/Absolute, 密封表压/Sealed
 激励/Supply: 恒流1.5mA/Constant Current 1.5mA
 输出/Output: 0~100mVDC(典型/Typical)
 补偿温度/Compensation Temperature: -5°C~60°C
 非线性/Nonlinearity: $\pm 0.25\%$ (典型/Typical)
 长期稳定性/Long-term Stability: $\pm 0.2\%$ (典型/Typical)
 压力接口/Process Connection: M20 \times 1.5, G1/2, G1等/etc



HP16卡盘纯平膜式压力传感器/HP16 Tri-Clamp Flat Film Pressure Sensor

量程范围/Pressure Range: -100kPa~0~20kPa~4MPa
 压力类型/Pressure Type: 表压/Gauge, 绝压/Absolute, 密封表压/Sealed
 激励/Supply: 恒流1.5mA/Constant Current 1.5mA
 输出/Output: 0~100mVDC(典型/Typical)
 补偿温度/Compensation Temperature: -5°C~60°C
 非线性/Nonlinearity: $\pm 0.25\%$ (典型/Typical)
 长期稳定性/Long-term Stability: $\pm 0.2\%$ (典型/Typical)
 尺寸/Size: $\Phi 25.2$, $\Phi 50.5$, $\Phi 64$ 等/etc



HP15M硅压阻压力传感器模块/HP15M Silicon Piezoresistive Pressure Sensor Module

量程范围/Pressure Range: 0~40kPa~10MPa
 压力类型/Pressure Type: 表压/Gauge, 密封表压/Sealed
 供电/Supply: 24VDC(10~30VDC)
 输出/Output: 4~20mADC
 补偿温度/Compensation Temperature: -20°C~80°C
 精度/Accuracy: $\pm 0.25\%$ FS(典型/Typical)
 长期稳定性/Long-term Stability: $\pm 0.25\%$ FS(典型/Typical)
 尺寸/Size: $\Phi 19$ mm

性能指标 Performance



HP318陶瓷压阻压力传感器/HP318 Ceramic Piezoresistive Pressure Sensor

量程范围/Pressure Range: 0~2bar~600bar
 激励/Supply: 2~30VDC
 满量程输出/Full Scale Output: ≥ 2 mV/V
 工作温度/Working Temperature: -40°C~135°C
 温漂系数/Temperature Coefficient: $\pm 0.03\%$ FS/°C
 精度/Accuracy: $\pm 0.5\%$ FS
 长期稳定性/Long-term Stability: $\pm 0.25\%$ (典型/Typical)
 尺寸/Size: $\Phi 18 \times 6.35$ mm, $\Phi 18 \times 3.5$ mm



HP314陶瓷压阻压力传感器/HP314 Ceramic Piezoresistive Pressure Sensor

量程范围/Pressure Range: 0~10bar~400bar
 激励/Supply: 2~30VDC
 满量程输出/Full Scale Output: ≥ 2 mV/V
 工作温度/Working Temperature: -40°C~135°C
 温漂系数/Temperature Coefficient: $\pm 0.03\%$ FS/°C
 精度/Accuracy: $\pm 0.5\%$ FS
 长期稳定性/Long-term Stability: $\pm 0.25\%$ (典型/Typical)
 尺寸/Size: $\Phi 13.5 \times 6.35$ mm, $\Phi 13.5 \times 3.5$ mm



HP500M陶瓷压阻压力传感器模块/HP500M Ceramic Piezoresistive Pressure Sensor Module

量程范围/Pressure Range: -1bar~0~0.5bar~600bar
 压力类型/Pressure Type: 表压/Gauge, 绝压/Absolute, 密封表压/Sealed
 供电/Supply: 24VDC
 输出/Output: 4~20mADC, 0/1~5VDC, 0/1~10VDC等/etc
 介质温度/Medium Temperature: -40°C~135°C
 精度/Accuracy: $\pm 0.5\%$ FS(典型/Typical)
 膜片类型/Diaphragm Type: 平膜/Flat Diaphragm
 尺寸/Size: $\Phi 18$ mm



HP600M陶瓷压阻压力传感器模块/HP600M Ceramic Piezoresistive Pressure Sensor Module

量程范围/Pressure Range: -1bar~0~2bar~400bar
 压力类型/Pressure Type: 表压/Gauge
 供电/Supply: 24VDC
 输出/Output: 4~20mADC, 0/1~5VDC, 0/1~10VDC等/etc
 介质温度/Medium Temperature: -40°C~135°C
 精度/Accuracy: $\pm 0.5\%$ FS(典型/Typical)
 膜片类型/Diaphragm Type: 凹底/Cavity
 尺寸/Size: $\Phi 18 \times 6.35$ mm



HCPS18陶瓷电容传感器/HCPS18 Ceramic Capacitive Pressure Sensor

量程范围/Pressure Range: -100kPa~0~20kPa~2MPa
 压力类型/Pressure Type: 表压/Gauge, 绝压/Absolute, 密封表压/Sealed
 膜片材料/Diaphragm Material: 氧化铝陶瓷Al₂O₃
 供电/Supply: 5VDC
 输出/Output: 0.5~4.5VDC比例电压/Ratiometric
 介质温度/Medium Temperature: -40°C~125°C
 精度/Accuracy: $\pm 0.2\%$ FS(典型/Typical)
 尺寸/Size: $\Phi 17.5$ mm

性能指标 Performance



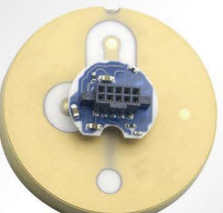
HCPS32陶瓷电容传感器/HCPS32 Ceramic Capacitive Pressure Sensor

量程范围/Pressure Range: -100kPa~0~2.5kPa~7MPa
 压力类型/Pressure Type: 表压/Gauge, 绝压/Absolute, 密封表压/Sealed
 膜片材料/Diaphragm Material: 99.9%超纯氧化铝(Al₂O₃)陶瓷
 供电/Supply: 5VDC
 输出/Output: 0.5~4.5VDC比例电压/Ratiometric
 介质温度/Medium Temperature: -40°C~125°C
 精度/Accuracy: ±0.2%FS(典型/Typical)
 尺寸/Size: Φ32.4mm



HCPS18D陶瓷电容传感器/HCPS18D Ceramic Capacitive Pressure Sensor

量程范围/Pressure Range: -100kPa~0~10kPa~10MPa
 压力类型/Pressure Type: 表压/Gauge, 绝压/Absolute, 密封表压/Sealed
 膜片材料/Diaphragm Material: 99.9%超纯氧化铝(Al₂O₃)陶瓷
 供电/Supply: 4.9~5.1VDC(模拟输出/Analog Output), 2.9~5.5VDC(数字输出/Digital Output)
 输出/Output: 电压信号/U, SPI, UART
 介质温度/Medium Temperature: -40°C~125°C
 精度/Accuracy: ±0.2%FS(典型/Typical)
 尺寸/Size: Φ17.5mm



HCPS32D陶瓷电容传感器/HCPS32D Ceramic Capacitive Pressure Sensor

量程范围/Pressure Range: -100kPa~0~10kPa~4MPa
 压力类型/Pressure Type: 表压/Gauge, 绝压/Absolute, 密封表压/Sealed
 膜片材料/Diaphragm Material: 99.9%超纯氧化铝(Al₂O₃)陶瓷
 供电/Supply: 2.9~5.5VDC
 输出/Output: 电压信号/U, SPI, UART
 介质温度/Medium Temperature: -40°C~125°C
 精度/Accuracy: ±0.2%FS(典型/Typical)
 尺寸/Size: Φ32.4mm



HS-CPS+B单晶硅压力传感器套件/HS-CPS+B Monosilicon Pressure Module

量程 Range	kPa	最大工作压力 MWP
S1	-1 ~ 1	2MPa
S2	-6 ~ 6	3MPa
M1	-40 ~ 40	3MPa
M2	-100 ~ 100	10MPa
M3	-100 ~ 200	10MPa
M4	-100 ~ 400	10MPa
L1	-100 ~ 4000	10MPa
L2	-100 ~ 40000	60MPa

输出信号/Output Signal: (4~20)mADC+HART
 供电电源/Supply Voltage: 10.5~45VDC
 补偿温度/Compensation Temperature: -10~70°C
 精度/Accuracy: ±0.075%FS
 压力接口/Pressure Port: M20×1.5 (M), NPT1/2 (F), etc



HS-DPS+B+J单晶硅差压传感器套件/HS-DPS+B+J Monosilicon Differential Pressure Module

量程 Range	kPa	单边过压 Unilateral overpressure	双边静压 Bilateral static pressure
S1	-1 ~ 1	2MPa	10MPa
S2	-6 ~ 6	3MPa	25MPa
M1	-40 ~ 40	16MPa	40MPa
M2	-100 ~ 100	16MPa	40MPa
M3	-200 ~ 200	16MPa	40MPa
M4	-400 ~ 400	16MPa	40MPa
L1	-4000 ~ 4000	16MPa	40MPa

输出信号/Output Signal: (4~20)mADC+HART
 供电电源/Supply Voltage: 10.5~45VDC
 补偿温度/Compensation Temperature: -10~70°C
 精度/Accuracy: ±0.075%FS
 压力接口/Pressure Port: NPT1/4 (F), M20×1.5 (M), etc

性能指标 Performance



HPM81/82单晶硅差压变送器/HPM81/82 Monosilicon Differential Pressure Transmitter

量程 Range	kPa	单边过压 Unilateral overpressure	双边静压 Bilateral static pressure
S1	-1 ~ 1	2MPa	10MPa
S2	-6 ~ 6	3MPa	25MPa
M1	-40 ~ 40	16MPa	40MPa
M2	-100 ~ 100	16MPa	40MPa
M3	-200 ~ 200	16MPa	40MPa
M4	-400 ~ 400	16MPa	40MPa
L1	-4000 ~ 4000	16MPa	40MPa

输出信号/Output Signal: (4~20)mADC+HART
 供电电源/Supply Voltage: 10.5~45VDC
 工作温度/Working Temperature: -40~125°C
 精度/Accuracy: ±0.075%FS
 压力接口/Pressure Port: NPT1/4 (F), M20×1.5 (M), etc
 防爆等级/Explosion Proof: Ex db IIC T6 Gb; Ex ia II CT6 Ga; Ex tb IIIC T80°C Db



HPM85单晶硅隔膜密封差压变送器/HPM85 Monosilicon Diaphragm Sealed Differential Pressure Transmitter

量程 Range	kPa	单边过压 Unilateral overpressure	双边静压 Bilateral static pressure
M1	-40 ~ 40	16MPa	40MPa
M2	-100 ~ 100	16MPa	40MPa
M3	-200 ~ 200	16MPa	40MPa
M4	-400 ~ 400	16MPa	40MPa
L1	-4000 ~ 4000	16MPa	40MPa

输出信号/Output Signal: (4~20)mADC+HART
 供电电源/Supply Voltage: 10.5~45VDC
 工作温度/Working Temperature: -40~125°C
 精度/Accuracy: ±0.1%FS
 压力接口/Pressure Port: 双法兰/Double Flange
 防爆等级/Explosion Proof: Ex db IIC T6 Gb; Ex ia II CT6 Ga; Ex tb IIIC T80°C Db



HPM86单晶硅压力变送器/HPM86 Monosilicon Pressure Transmitter

量程 Range	kPa	最大工作压力 MWP
S1	-1 ~ 1	2MPa
S2	-6 ~ 6	3MPa
M1	-40 ~ 40	3MPa
M2	-100 ~ 100	10MPa
M3	-100 ~ 200	10MPa
M4	-100 ~ 400	10MPa
L1	-100 ~ 4000	10MPa
L2	-100 ~ 40000	60MPa

输出信号/Output Signal: (4~20)mADC+HART
 供电电源/Supply Voltage: 10.5~45V
 工作温度/Working Temperature: -40~125°C
 精度/Accuracy: ±0.075%FS
 压力接口/Pressure Port: M20×1.5 (M), NPT1/2 (F), etc
 防爆等级/Explosion Proof: Ex db IIC T6 Gb; Ex ia II CT6 Ga; Ex tb IIIC T80°C Db



HPM87单晶硅法兰隔膜型压力变送器/HPM87 Monosilicon Flange Diaphragm Pressure Transmitter

量程 Range	kPa	过压 overpressure
M1	-40 ~ 40	3MPa
M2	-100 ~ 100	8MPa
M3	-100 ~ 200	8MPa
M4	-100 ~ 400	8MPa
L1	-100 ~ 4000	10MPa

输出信号/Output Signal: (4~20)mADC+HART
 供电电源/Supply Voltage: 10.5~45VDC
 工作温度/Working Temperature: -40~125°C
 精度/Accuracy: ±0.1%FS
 压力接口/Pressure Port: 法兰/Flange
 安装方式/Mounting Type: 直装/Vertical Mount, 侧装/Side Mount
 防爆等级/Explosion Proof: Ex db IIC T6 Gb; Ex ia II CT6 Ga; Ex tb IIIC T80°C Db



HPM88陶瓷电容高精度压力变送器/HPM88 Ceramic Capacitive Pressure Transmitter

量程 Range	测量类型 Pressure type	kPa	过压能力 MWP
G1	表压	0 ~ 10	400
G2	表压	0 ~ 20	600
G3	表压	0 ~ 40	600
G4	表压	0 ~ 100	1000
G5	表压	0 ~ 200	1800
G6	表压	0 ~ 400	2500
G7	表压	0 ~ 1000	4000
G8	表压	0 ~ 2000	4000
G9	表压	0 ~ 4000	6000
G0	表压	0 ~ 7000	10500

输出信号/Output Signal: (4~20)mADC+HART
 供电电源/Supply Voltage: 10.5~45VDC
 介质温度/Medium Temperature: -40~125°C
 精度/Accuracy: ±0.1%FS
 传感器类型/Sensor Type: 陶瓷电容/ Ceramic Capacitive
 压力类型/Pressure Type: 表压/Gauge(可测负压)
 绝压/Absolute
 防爆等级/Explosion Proof: Ex db IIC T6 Gb; Ex tb IIIC T80°C Db

性能指标 Performance



HPM410投入式液位变送器/HPM410 Submersible Level Transmitter

量程范围/Pressure Range: 0~1~500mHzO
 供电/Supply: 24VDC
 输出/Output: 4~20mADC, 0/1~10VDC, RS485等/etc
 介质温度/Medium Temperature: -40°C~80°C
 补偿温度/Compensation Temperature: 0°C~70°C(典型/Typical), -10°C~80°C(可选/Optional)
 温漂/Temperature Drift: $\leq \pm 1.0\%$ FS(参比/Reference 25°C)
 精度/Accuracy: $\pm 0.5\%$ FS(典型/Typical), $\pm 0.2\%$ FS(可选/Optional)
 材料/Material: 304, 316L或Ti

HPM410-S螺纹安装式液位变送器/HPM410-S Submersible Level Transmitter With Screw Thread



量程范围/Pressure Range: 0~1~500mHzO(液位/Level), 0~10kPa~60MPa(压力/Pressure)
 供电/Supply: 24VDC
 输出/Output: 4~20mADC, 0/1~10VDC, RS485等/etc
 介质温度/Medium Temperature: -40°C~80°C
 补偿温度/Compensation Temperature: 0°C~70°C(典型/Typical), -10°C~80°C(可选/Optional)
 温漂/Temperature Drift: $\leq \pm 1.0\%$ FS(参比/Reference 25°C)
 精度/Accuracy: $\pm 0.5\%$ FS(典型/Typical), $\pm 0.2\%$ FS(可选/Optional)
 压力接口/Process Connection: M20×1.5, G1/2等/etc

HPM410-C防泥沙水草型液位变送器/HPM410-C Anti-sediment Submersible Level Transmitter



量程范围/Pressure Range: 0~1~500mHzO
 供电/Supply: 24VDC
 输出/Output: 4~20mADC, 0/1~10VDC, RS485等/etc
 介质温度/Medium Temperature: -40°C~80°C
 补偿温度/Compensation Temperature: 0°C~70°C(典型/Typical), -10°C~80°C(可选/Optional)
 温漂/Temperature Drift: $\leq \pm 1.0\%$ FS(参比/Reference 25°C)
 精度/Accuracy: $\pm 0.5\%$ FS(典型/Typical), $\pm 0.2\%$ FS(可选/Optional)
 材料/Material: 304, 316L或Ti

HPM410-F法兰笼式液位变送器/HPM410-F Flange Cage Type Submersible Level Transmitter



量程范围/Pressure Range: 0~1~200mHzO
 供电/Supply: 24VDC
 输出/Output: 4~20mADC, 0/1~10VDC, RS485等/etc
 介质温度/Medium Temperature: -20°C~85°C
 补偿温度/Compensation Temperature: 0°C~70°C
 温漂系数/Temperature Coefficient: $\pm 0.03\%$ FS/°C(参比/Reference 25°C)
 精度/Accuracy: $\pm 0.5\%$ FS(典型/Typical), $\pm 0.25\%$ FS(可选/Optional)
 材料/Material: 304, 316L或Ti

HPM410-DP型大量程投入式液位变送器/HPM410-DP Large Range Submersible Level Transmitter



量程范围/Pressure Range: 0~200~2000mHzO
 供电/Supply: 24VDC
 输出/Output: 4~20mADC, RS485等/etc
 介质温度/Medium Temperature: -40°C~80°C
 补偿温度/Compensation Temperature: -10°C~70°C(0.5级/Level), -10°C~80°C(0.2级/Level)
 温漂/Temperature Drift: $\leq \pm 1.5\%$ FS(0.5级/Level), $\leq \pm 1.0\%$ FS(0.2级/Level)
 精度/Accuracy: $\pm 0.5\%$ FS(典型/Typical), $\pm 0.2\%$ FS(可选/Optional)
 材料/Material: 304, 316L或Ti

性能指标 Performance



HPM4116超细液位变送器/HPM4116 Small Diameter Submersible Level Transmitter

量程范围/Pressure Range: 0~10~300mHzO
 供电/Supply: 24VDC
 输出/Output: 4~20mADC, 0/1~10VDC等/etc
 介质温度/Medium Temperature: -40°C~80°C
 补偿温度/Compensation Temperature: 0°C~70°C(典型/Typical)
 温漂/Temperature Drift: $\leq \pm 1.0\%$ FS(参比/Reference 35°C)
 精度/Accuracy: $\pm 0.25\%$ FS
 外壳直径/Housing Diameter: $\Phi 16$ mm

HPM4119小直径液位变送器/HPM4119 Small Diameter Submersible Level Transmitter



量程范围/Pressure Range: 0~1~350mHzO
 供电/Supply: 24VDC
 输出/Output: 4~20mADC, 0/1~10VDC等/etc
 介质温度/Medium Temperature: -40°C~80°C
 补偿温度/Compensation Temperature: 0°C~70°C(典型/Typical), -20°C~85°C(可选/Optional)
 温漂/Temperature Drift: $\leq \pm 1.0\%$ FS(参比/Reference 35°C)
 精度/Accuracy: $\pm 0.25\%$ FS(典型/Typical), $\pm 0.1\%$ FS(可选/Optional)
 外壳直径/Housing Diameter: $\Phi 19$ mm

HPM413陶瓷压阻型液位变送器/HPM413 Ceramic Piezoresistive Submersible Level Transmitter



量程范围/Pressure Range: 0~2~200mHzO
 供电/Supply: 24VDC
 输出/Output: 4~20mADC, 0/1~5VDC, RS485等/etc
 介质温度/Medium Temperature: -20°C~80°C
 精度/Accuracy: $\pm 0.5\%$ FS
 外壳直径/Housing Diameter: $\Phi 22$ mm
 传感器类型/Sensor Type: 陶瓷压阻/Ceramic Piezoresistive
 外壳材料/Housing Material: 316L或Ti

HPM418陶瓷电容型液位变送器/HPM418 Ceramic Capacitive Submersible Level Transmitter



量程范围/Pressure Range: 0~0.5~200mHzO
 供电/Supply: 24VDC
 输出/Output: 4~20mADC, 0/1~5VDC, RS485等/etc
 介质温度/Medium Temperature: -20°C~80°C
 精度/Accuracy: $\pm 0.25\%$ FS
 外壳直径/Housing Diameter: $\Phi 22$ mm
 传感器类型/Sensor Type: 陶瓷电容/Ceramic Capacitive
 外壳材料/Housing Material: 316L或Ti

HPM418DZ陶瓷电容型纯钛液位变送器/HPM418DZ Ceramic Capacitive Submersible Level Transmitter



量程范围/Pressure Range: 0.7~2bar~5bar(绝压/Absolute), 0~1~200mHzO(液位/Level)
 供电/Supply: 24VDC
 输出/Output: 4~20mADC
 介质温度/Medium Temperature: -20°C~80°C
 补偿温度/Compensation Temperature: -20°C~80°C
 精度/Accuracy: $\pm 0.25\%$ FS
 传感器类型/Sensor Type: 陶瓷电容/Ceramic Capacitive
 外壳材料/Housing Material: Ti

性能指标 Performance



HPM47W-RPN防腐型液位变送器/HPM47W-RPN Anticorrosive Submersible Level Transmitter

量程范围/Pressure Range: 0~2...200mHzO
 供电/Supply: 24VDC
 输出/Output: 4~20mADC, 0/1~5VDC, RS485等/etc
 工作温度/Working Temperature: -10°C~70°C
 精度/Accuracy: ±0.5%FS
 外壳直径/Housing Diameter: Φ44mm
 传感器类型/Sensor Type: 陶瓷压阻/Ceramic Piezoresistive
 材料/Material: PTFE, PVC, PP or PVDF(外壳/Housing) 陶瓷Al₂O₃96%(传感器/Sensor)
 氟塑料/Fluoroplastics(电缆/Cable) 氟素橡胶/FKM or 全氟橡胶/FFKM(密封圈/Sealing Ring)



HPM47W-RPD防腐型液位变送器/HPM47W-RPD Anticorrosive Submersible Level Transmitter

量程范围/Pressure Range: 0~2...20mHzO
 供电/Supply: 24VDC
 输出/Output: 4~20mADC, RS485等/etc
 介质温度/Medium Temperature: -10°C~70°C
 精度/Accuracy: ±0.5%FS
 探头直径/Probe Diameter: Φ44mm
 传感器类型/Sensor Type: 陶瓷压阻/Ceramic Piezoresistive
 材料/Material: PTFE, PVC, PP or PVDF(外壳/Housing) 陶瓷Al₂O₃96%(传感器/Sensor)
 氟塑料/Fluoroplastics(电缆/Cable) 氟素橡胶/FKM or 全氟橡胶/FFKM(密封圈/Sealing Ring)



HPM47W-CPN防腐型液位变送器/HPM47W-CPN Anticorrosive Submersible Level Transmitter

量程范围/Pressure Range: 0~0.5...200mHzO
 供电/Supply: 24VDC
 输出/Output: 4~20mADC, 0/1~5VDC, RS485等/etc
 工作温度/Working Temperature: -10°C~70°C
 精度/Accuracy: ±0.2%FS
 外壳直径/Housing Diameter: Φ44mm
 传感器类型/Sensor Type: 陶瓷电容/Ceramic Capacitive
 材料/Material: PTFE, PVC, PP or PVDF(外壳/Housing) 99.9%超纯氧化铝Al₂O₃陶瓷(传感器/Sensor)
 氟塑料/Fluoroplastics(电缆/Cable) 氟素橡胶/FKM or 全氟橡胶/FFKM(密封圈/Sealing Ring)



HPM47W-CPD防腐型液位变送器/HPM47W-CPD Anticorrosive Submersible Level Transmitter

量程范围/Pressure Range: 0~0.5...20mHzO
 供电/Supply: 24VDC
 输出/Output: 4~20mADC, RS485等/etc
 介质温度/Medium Temperature: -10°C~70°C
 精度/Accuracy: ±0.2%FS
 探头直径/Probe Diameter: Φ44mm
 传感器类型/Sensor Type: 陶瓷电容/Ceramic Capacitive
 材料/Material: PTFE, PVC, PP or PVDF(外壳/Housing) 99.9%超纯氧化铝Al₂O₃陶瓷(传感器/Sensor)
 氟塑料/Fluoroplastics(电缆/Cable) 氟素橡胶/FKM or 全氟橡胶/FFKM(密封圈/Sealing Ring)



HPM47W-CSN投入型压力变送器/HPM47W-CSN Submersible Level Transmitter

量程范围/Pressure Range: 0~0.5...400mHzO
 供电/Supply: 24VDC
 输出/Output: 4~20mADC, 0/1~5VDC, RS485等/etc
 工作温度/Working Temperature: -20°C~80°C
 精度/Accuracy: ±0.25%
 外壳直径/Housing Diameter: Φ39mm
 传感器类型/Sensor Type: 陶瓷电容/Ceramic Capacitive
 材料/Material: 316L or 钛合金/Ti(外壳/Housing) 99.9%超纯氧化铝Al₂O₃陶瓷(传感器/Sensor)
 氟塑料/Fluoroplastics or 聚氨酯/PU(电缆/Cable) 氟素橡胶/FKM or 全氟橡胶/FFKM(密封圈/Sealing Ring)

性能指标 Performance



HPM410W本安型投入式压力变送器/HPM410W Intrinsic Safety Explosion-proof Submersible Level Transmitter

量程范围/Pressure Range: 0~1...350mHzO
 供电/Supply: 24VDC
 输出/Output: 4~20mADC
 防爆标志/Explosion Proof Mark: Ex ia IIC T6 Ga
 工作温度/Working Temperature: -40°C~60°C
 精度/Accuracy: ±0.5%FS(典型/Typical), ±0.2%FS(可选/Optional)
 外壳直径/Housing Diameter: Φ26.5mm
 材料/Material: 304, 316L或Ti



HPM420W分体式液位变送器/HPM420W Split-type Submersible Level Transmitter

量程范围/Pressure Range: 0~1...300mHzO
 供电/Supply: 24VDC
 输出/Output: 4~20mADC, 0/1~10VDC, RS485等/etc
 介质温度/Medium Temperature: -40°C~80°C
 精度/Accuracy: ±0.5%FS
 探头直径/Probe Diameter: Φ27mm
 固定方式/Mounting Type: M30×1.5, 法兰/Flange
 探头材料/Probe Material: 304, 316L或Ti



HPM84防爆型投入式液位变送器/HPM84 Explosion-proof Submersible Level Transmitter

量程范围/Pressure Range: 0~1...300mHzO
 供电/Supply: 24VDC
 输出/Output: 4~20mADC, 0/1~10VDC, RS485等/etc
 防爆标志/Explosion Proof Mark: Ex d IIC T4~T6 Gb
 工作温度/Working Temperature: -40°C~60°C
 精度/Accuracy: ±0.5%FS
 探头直径/Probe Diameter: Φ27mm
 固定方式/Mounting Type: G1/2, 法兰/Flange



HPM420-T集气筒型耐高温投入式液位变送器/HPM420-T High Temperature Resistance Submersible Level Transmitter

量程范围/Pressure Range: 0~1...20mHzO
 供电/Supply: 24VDC
 输出/Output: 4~20mADC, 0/1~10VDC, RS485等/etc
 介质温度/Medium Temperature: -40°C~200°C
 精度/Accuracy: ±0.5%FS
 探头直径/Probe Diameter: Φ27mm
 固定方式/Mounting Type: G1, M30×1.5, 法兰/Flange
 探头材料/Probe Material: 304 or 316L



HPM420-YG硬杆型投入式液位变送器/HPM420-YG Submersible Level Transmitter

量程范围/Pressure Range: 0~0.3...3mHzO
 供电/Supply: 24VDC
 输出/Output: 4~20mADC, 0/1~10VDC, RS485等/etc
 介质温度/Medium Temperature: -40°C~85°C
 精度/Accuracy: ±0.5%FS
 探头直径/Probe Diameter: Φ26.5mm
 固定方式/Mounting Type: G1, M30×1.5, 法兰/Flange
 探头材料/Probe Material: 304 or 316L

性能指标 Performance



HPM710齐平膜型压力变送器/HPM710 Flat Diaphragm Pressure Transmitter
 量程范围/Pressure Range: -100kPa~0~20kPa~40MPa(表压/Gauge), 0~35kPa~10MPa(绝压/Absolute)
 传感器类型/Sensor Type: 硅压阻/Silicon Piezoresistive
 供电/Supply: 24VDC
 输出/Output: 4~20mADC, 0/1~5VDC, 0/1~10VDC等/etc
 精度/Accuracy: ±0.5%FS
 介质温度/Medium Temperature: -40~80°C, -40~140°C(可选/Optional), -40~180°C(可选/Optional)
 电气连接/Electrical Connection: 赫斯曼/DIN43650, M12×1, 直接出线/Cable Outlet
 压力接口/Process Connection: M20×1.5, G1/2, G1等/etc



HPM711齐平膜卫生型压力变送器/HPM711 Flat Diaphragm Hygienic Type Pressure Transmitter
 量程范围/Pressure Range: -100kPa~0~20kPa~40MPa(表压/Gauge), 0~35kPa~10MPa(绝压/Absolute)
 传感器类型/Sensor Type: 硅压阻/Silicon Piezoresistive
 供电/Supply: 24VDC
 输出/Output: 4~20mADC, 0/1~5VDC, 0/1~10VDC等/etc
 精度/Accuracy: ±0.5%FS
 介质温度/Medium Temperature: -40~100°C, -40~150°C(可选/Optional)
 电气连接/Electrical Connection: 赫斯曼/DIN43650, M12×1, 直接出线/Cable Outlet
 压力接口/Process Connection: G1/2, G1, G1卫生型/G1 Hygienic Type等/etc



HPM713陶瓷平膜型压力变送器/HPM713 Ceramic Flat Diaphragm Pressure Transmitter
 量程范围/Pressure Range: -1~0~0.2~400bar(表压/Gauge), 0~0.2~400bar(绝压/Absolute)
 传感器类型/Sensor Type: 陶瓷压阻/Ceramic Piezoresistive
 供电/Supply: 24VDC
 输出/Output: 4~20mADC, 0/1~5VDC, 0/1~10VDC, RS485等/etc
 精度/Accuracy: ±0.5%FS
 介质温度/Medium Temperature: -40~120°C
 电气连接/Electrical Connection: 赫斯曼/DIN43650, M12×1, 直接出线/Cable Outlet
 压力接口/Process Connection: G3/4, G1等/etc



HPM718平膜型陶瓷电容压力变送器/HPM718 Flat Diaphragm Ceramic Capacitive Pressure Transmitter
 量程范围/Pressure Range: -100kPa~0~2.5kPa~100bar(表压/Gauge), 0~2.5kPa~100bar(绝压/Absolute)
 传感器类型/Sensor Type: 陶瓷电容/Ceramic Capacitive
 供电/Supply: 24VDC
 输出/Output: 4~20mADC, 0/1~5VDC, 0/1~10VDC, RS485等/etc
 精度/Accuracy: ±0.25%FS
 介质温度/Medium Temperature: -40~100°C
 电气连接/Electrical Connection: 赫斯曼/DIN43650, M12×1, 直接出线/Cable Outlet
 压力接口/Process Connection: G1", G1 1/2" 等/etc



HPM718-H高温型平膜压力变送器/HPM718-H High Temperature Resistance Pressure Transmitter
 量程范围/Pressure Range: -100kPa~0~2.5kPa~100bar(表压/Gauge), 0~2.5kPa~100bar(绝压/Absolute)
 传感器类型/Sensor Type: 陶瓷电容/Ceramic Capacitive
 供电/Supply: 24VDC
 输出/Output: 4~20mADC, 0/1~5VDC, 0/1~10VDC, RS485等/etc
 精度/Accuracy: ±0.25%FS
 介质温度/Medium Temperature: -40~140°C
 电气连接/Electrical Connection: 赫斯曼/DIN43650, M12×1, 直接出线/Cable Outlet
 压力接口/Process Connection: G1", G1 1/2" 等/etc

性能指标 Performance



HPM720卫生型压力变送器/HPM720 Hygienic Pressure Transmitter
 量程范围/Pressure Range: -100kPa~0~10kPa~2.5MPa(表压/Gauge), 0~20kPa~2.5MPa(绝压/Absolute)
 传感器类型/Sensor Type: 硅压阻/Silicon Piezoresistive
 供电/Supply: 24VDC
 输出/Output: 4~20mADC, 0/1~5VDC, 0/1~10VDC等/etc
 精度/Accuracy: ±0.5%FS
 介质温度/Medium Temperature: -40~80°C, -40~140°C(可选/Optional), -40~180°C(可选/Optional)
 电气连接/Electrical Connection: 赫斯曼/DIN43650, M12×1, 直接出线/Cable Outlet
 压力接口/Process Connection: 卡盘/Tri-clamp, DRD, SMS等/etc



HPM723陶瓷卡盘型压力变送器/HPM723 Tri-clamp Ceramic Pressure Transmitter
 量程范围/Pressure Range: -1~0~0.2~20bar(表压/Gauge), 0~0.2~20bar(绝压/Absolute)
 传感器类型/Sensor Type: 陶瓷压阻/Ceramic Piezoresistive
 供电/Supply: 24VDC
 输出/Output: 4~20mADC, 0/1~5VDC, 0/1~10VDC, RS485等/etc
 精度/Accuracy: ±0.5%FS
 介质温度/Medium Temperature: -40~130°C
 电气连接/Electrical Connection: 赫斯曼/DIN43650, M12×1, 直接出线/Cable Outlet
 卡盘尺寸/Tri-clamp Size: Φ50.5, Φ64



HPM760卫生型压力变送器/HPM760 Hygienic Pressure Transmitter
 量程范围/Pressure Range: -100kPa~0~10kPa~2.5MPa(表压/Gauge), 0~20kPa~2.5MPa(绝压/Absolute)
 传感器类型/Sensor Type: 硅压阻/Silicon Piezoresistive
 供电/Supply: 24VDC
 输出/Output: 4~20mADC, 0/1~5VDC, 0/1~10VDC等/etc
 精度/Accuracy: ±0.5%FS
 介质温度/Medium Temperature: -40~80°C, -40~140°C(可选/Optional), -40~180°C(可选/Optional)
 电气连接/Electrical Connection: M12×1
 压力接口/Process Connection: 卡盘/Tri-Clamp, DRD, SMS等/etc



HPM768陶瓷电容压力变送器/HPM768 Ceramic Capacitive Pressure Transmitter
 量程范围/Pressure Range: -100kPa~0~2.5kPa~4MPa(表压/Gauge), 0~10kPa~4MPa(绝压/Absolute)
 传感器类型/Sensor Type: 陶瓷电容/Ceramic Capacitive
 供电/Supply: 24VDC
 输出/Output: 4~20mADC, 4~20mADC+HART
 精度/Accuracy: ±0.25%
 介质温度/Medium Temperature: -40~125°C, -40~140°C(可选/Optional)
 电气连接/Electrical Connection: 缆塞(壳体内带接线端子)/Cable Gland, M12×1
 压力接口/Process Connection: 卡盘/Tri-Clamp, 法兰/Flange, DRD, SMS等/etc



HPM788陶瓷卫生型压力变送器/HPM788 Ceramic Hygienic Pressure Transmitter
 量程范围/Pressure Range: -100kPa~0~2.5kPa~4MPa(表压/Gauge), 0~10kPa~4MPa(绝压/Absolute)
 传感器类型/Sensor Type: 陶瓷电容/Ceramic Capacitive
 供电/Supply: 24VDC
 输出/Output: 4~20mADC, 4~20mADC+HART
 精度/Accuracy: ±0.25%FS
 介质温度/Medium Temperature: -40~125°C, -40~140°C(可选/Optional)
 电气连接/Electrical Connection: 赫斯曼/Hirschmann, 直接出线/Cable Outlet
 卡盘尺寸/Tri-clamp Size: Φ50.5, Φ64

性能指标 Performance



HPM126高稳型压力变送器/HPM126 High Stable Type Pressure Transmitter

量程范围/Pressure Range: -100kPa~0~2kPa~100MPa(表压/Gauge), 0~10kPa~10MPa(绝压/Absolute)
 传感器类型/Sensor Type: 硅压阻/Silicon Piezoresistive
 供电/Supply: 24VDC
 输出/Output: 4~20mADC
 精度/Accuracy: $\pm 0.5\%FS$
 介质温度/Medium Temperature: -40~125°C
 电气连接/Electrical Connection: 缆塞/Cable Entry
 压力接口/Process Connection: G1/2, M20×1.5等/etc



HPM128防爆型压力变送器/HPM128 Intrinsic Safety Explosion-proof Pressure Transmitter

量程范围/Pressure Range: -100kPa~0~10kPa~100MPa(表压/Gauge), 0~10kPa~10MPa(绝压/Absolute)
 供电/Supply: 24VDC
 输出/Output: 4~20mADC
 防爆标志/Explosion Proof Mark: Ex ia IIC T6 Ga
 精度/Accuracy: $\pm 0.5\%FS$
 介质温度/Medium Temperature: -40~60°C
 电气连接/Electrical Connection: 缆塞/Cable Entry
 压力接口/Process Connection: G1/2, M20×1.5等/etc



HPM130精巧型压力变送器/HPM130 Compact Pressure Transmitter

量程范围/Pressure Range: -100kPa~0~10kPa~60MPa(表压/Gauge), 0~10kPa~10MPa(绝压/Absolute)
 传感器类型/Sensor Type: 硅压阻/Silicon Piezoresistive
 供电/Supply: 24VDC
 输出/Output: 4~20mADC, 0/1~5VDC, 0/1~10VDC等/etc
 精度/Accuracy: $\pm 0.5\%FS$
 介质温度/Medium Temperature: -40~100°C
 电气连接/Electrical Connection: 赫斯曼/DIN43650, 直接出线/Cable Outlet
 压力接口/Process Connection: G1/4, NPT1/4等/etc



HPM1300微型压力变送器/HPM1300 Miniature Pressure Transmitter

量程范围/Pressure Range: 0~10kPa~40MPa(表压/Gauge), 0~20kPa~10MPa(绝压/Absolute)
 传感器类型/Sensor Type: 硅压阻/Silicon Piezoresistive
 供电/Supply: 24VDC
 输出/Output: 4~20mADC, 0/1~5VDC, 0/1~10VDC, RS485等/etc
 精度/Accuracy: $\pm 0.5\%FS$
 介质温度/Medium Temperature: -40~85°C
 电气连接/Electrical Connection: 直接出线/Cable Outlet, 赫斯曼/DIN43650, M12×1
 压力接口/Process Connection: G1/4, NPT1/4等/etc



HPM1301微型压力变送器/HPM1301 Miniature Pressure Transmitter

量程范围/Pressure Range: 0~50kPa~40MPa(表压/Gauge), 0~50kPa~10MPa(绝压/Absolute)
 传感器类型/Sensor Type: 硅压阻/Silicon Piezoresistive
 供电/Supply: 24VDC
 输出/Output: 4~20mADC, 0/1~5VDC, 0/1~10VDC, RS485等/etc
 精度/Accuracy: $\pm 0.25\%FS$
 介质温度/Medium Temperature: -40~85°C
 电气连接/Electrical Connection: 直接出线/Cable Outlet
 压力接口/Process Connection: G1/2, M20×1.5等/etc

性能指标 Performance



HPM131型压力变送器/HPM131 Pressure Transmitter

量程范围/Pressure Range: -100kPa~0~500Pa~100kPa(表压/Gauge)
 传感器类型/Sensor Type: 硅压阻/Silicon Piezoresistive
 供电/Supply: 24VDC
 输出/Output: 4~20mADC, 0/1~5VDC, 0/1~10VDC等/etc
 精度/Accuracy: $\pm 0.5\%FS$
 介质温度/Medium Temperature: -40~100°C
 电气连接/Electrical Connection: 直接出线/Cable Outlet
 压力接口/Process Connection: G1/4, NPT1/4等/etc



HPM133经济型陶瓷压力变送器/HPM133 Economical Ceramic Pressure Transmitter

量程范围/Pressure Range: 0~1~50bar(表压/Gauge)
 传感器类型/Sensor Type: 陶瓷压阻/Ceramic Piezoresistive
 供电/Supply: 24VDC
 输出/Output: 4~20mADC, 0/1~5VDC, 0/1~10VDC等/etc
 精度/Accuracy: $\pm 1.0\%FS$ (典型/Typical), $\pm 0.5\%FS$ (可选/Optional)
 介质温度/Medium Temperature: -40~100°C
 电气连接/Electrical Connection: 直接出线/Cable Outlet, 赫斯曼/DIN43650, 派克/Packard, 航插/Aviation Plug Connector
 压力接口/Process Connection: G1/4, NPT1/4等/etc



HPM133P水泵专用压力变送器/HPM133P Water Pump Dedicated Pressure Transmitter

量程范围/Pressure Range: 0~1~50bar(表压/Gauge)
 传感器类型/Sensor Type: 陶瓷压阻/Ceramic Piezoresistive
 供电/Supply: 24VDC
 输出/Output: 4~20mADC, 0/1~5VDC, 0/1~10VDC等/etc
 精度/Accuracy: $\pm 1.0\%FS$
 介质温度/Medium Temperature: -40~100°C
 电气连接/Electrical Connection: 直接出线/Cable Outlet
 压力接口/Process Connection: G1/4, NPT1/4, R1/4等/etc



HPM135制冷专用压力变送器/HPM135 Refrigeration Specific Pressure Transmitter

量程范围/Pressure Range: 0~1~50bar(表压/Gauge)
 传感器类型/Sensor Type: 陶瓷压阻/Ceramic Piezoresistive
 供电/Supply: 24VDC, 5VDC
 输出/Output: 4~20mADC, 0/1~10VDC, 0.5~4.5VDC等/etc
 精度/Accuracy: $\pm 0.5\%FS$
 介质温度/Medium Temperature: -35~120°C
 电气连接/Electrical Connection: 派克/Packard, 赫斯曼/DIN43650
 压力接口/Process Connection: 7/16~20UNF内螺纹/Female, 带顶针; 7/16~20UNF外螺纹/Male; G1/4外螺纹/Male



HPM135B制冷专用压力变送器/HPM135B Refrigeration Specific Pressure Transmitter

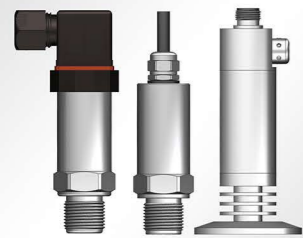
量程范围/Pressure Range: 0~1~50bar(表压/Gauge)
 传感器类型/Sensor Type: 陶瓷电容/Ceramic Capacitive
 供电/Supply: 5VDC
 输出/Output: 0.5~4.5V比例电压/Ratiometric
 精度/Accuracy: $\pm 1.0\%FS$
 介质温度/Medium Temperature: -35~110°C
 电气连接/Electrical Connection: 派克/Packard, 直接出线/Cable Outlet
 压力接口/Process Connection: 7/16~20UNF内螺纹/Female, 带顶针; 7/16~20UNF外螺纹/Male; G1/4外螺纹/Male

性能指标 Performance



HPM180通用型压力变送器/HPM180 General Pressure Transmitter

量程范围/Pressure Range: -100kPa~0~2kPa~100MPa(表压/Gauge), 0~10kPa~10MPa(绝压/Absolute)
 传感器类型/Sensor Type: 硅压阻/Silicon Piezoresistive
 供电/Supply: 24VDC
 输出/Output: 4~20mADC, 0/1~5VDC, 0/1~10VDC等/etc
 精度/Accuracy: $\pm 0.5\%$ FS(标准精度/Standard), $\pm 0.2\%$ FS(提高精度/Improved), $\pm 0.1\%$ FS(特优精度/Premium)
 介质温度/Medium Temperature: -40~125°C
 电气连接/Electrical Connection: 赫斯曼/DIN43650, M12×1, 直接出线/Cable Outlet
 压力接口/Process Connection: G1/2, M20×1.5等/etc



HPM180本安型压力变送器/HPM180 Intrinsic Safety Explosion-proof Pressure Transmitter

量程范围/Pressure Range: -100kPa~0~2kPa~100MPa(表压/Gauge), 0~10kPa~10MPa(绝压/Absolute)
 供电/Supply: 24VDC
 输出/Output: 4~20mADC
 防爆标志/Explosion-proof Mark: Ex ia IIC T6 Ga
 工作温度/Working Temperature: -40°C~60°C
 精度/Accuracy: $\pm 0.5\%$ FS(标准精度/Standard), $\pm 0.2\%$ FS(提高精度/Improved), $\pm 0.1\%$ FS(特优精度/Premium)
 电气连接/Electrical Connection: 赫斯曼/DIN43650, M12×1, 直接出线/Cable Outlet
 压力接口/Process Connection: G1/2, M20×1.5等/etc



HPM1800经济型压力变送器/HPM1800 Economical Pressure Transmitter

量程范围/Pressure Range: -100kPa~0~10kPa~60MPa(表压/Gauge), 0~20kPa~10MPa(绝压/Absolute)
 传感器类型/Sensor Type: 硅压阻/Silicon Piezoresistive
 供电/Supply: 24VDC
 输出/Output: 4~20mADC, 0/1~5VDC, 0/1~10V等/etc
 精度/Accuracy: $\pm 0.5\%$ FS(标准精度/Standard), $\pm 0.2\%$ FS(提高精度/Improved)
 介质温度/Medium Temperature: -40~100°C
 电气连接/Electrical Connection: 赫斯曼/DIN43650, 直接出线/Cable Outlet
 压力接口/Process Connection: G1/2, M20×1.5等/etc



HPM1801防水型压力变送器/HPM1801 Waterproof Pressure Transmitter

量程范围/Pressure Range: -100kPa~0~2kPa~60MPa(表压/Gauge), 0~10kPa~10MPa(绝压/Absolute)
 传感器类型/Sensor Type: 硅压阻/Silicon Piezoresistive
 供电/Supply: 24VDC
 输出/Output: 4~20mADC, 0/1~5VDC, 0/1~10VDC, RS485等/etc
 精度/Accuracy: $\pm 0.5\%$ FS(标准精度/Standard), $\pm 0.2\%$ FS(提高精度/Improved)
 介质温度/Medium Temperature: -40~80°C
 电气连接/Electrical Connection: 直接出线/Cable Outlet
 压力接口/Process Connection: G1/2, M20×1.5等/etc



HPM181高精度压力变送器/HPM181 High-precision Pressure Transmitter

量程范围/Pressure Range: -100kPa~0~10kPa~100MPa(表压/Gauge), 0~10kPa~2MPa(绝压/Absolute)
 传感器类型/Sensor Type: 硅压阻/Silicon Piezoresistive
 供电/Supply: 24VDC
 输出/Output: 4~20mADC, 0/1~5VDC, 0/1~10VDC等/etc
 精度/Accuracy: $\pm 0.075\%$ FS(标准精度/Standard), $\pm 0.05\%$ FS(提高精度/Improved)
 介质温度/Medium Temperature: -30~120°C
 电气连接/Electrical Connection: 赫斯曼/DIN43650, 直接出线/Cable Outlet等/etc
 压力接口/Process Connection: G1/4, G1/2, M20×1.5等/etc

性能指标 Performance



HPM185智能型压力变送器/HPM185 Intelligent Pressure Transmitter

量程范围/Pressure Range: -100kPa~0~2kPa~100MPa(表压/Gauge), 0~10kPa~10MPa(绝压/Absolute)
 传感器类型/Sensor Type: 硅压阻/Silicon Piezoresistive
 供电/Supply: 24VDC
 输出/Output: RS485, 4~20mADC+HART
 精度/Accuracy: $\pm 0.5\%$ FS(标准精度/Standard), $\pm 0.2\%$ FS(提高精度/Improved)
 介质温度/Medium Temperature: -40~125°C
 电气连接/Electrical Connection: 赫斯曼/DIN43650, M12×1, 直接出线/Cable Outlet
 压力接口/Process Connection: G1/2, M20×1.5等/etc



HPM17-RN防腐压力变送器/HPM17-RN Anti-corrosion Pressure Transmitter

量程范围/Pressure Range: -1~0~1~20bar(表压/Gauge), 0~1~20bar(绝压/Absolute)
 传感器类型/Sensor Type: 陶瓷压阻/Ceramic Piezoresistive
 供电/Supply: 24VDC
 输出/Output: 4~20mADC, 0/1~5VDC, 0/1~10VDC, RS485等/etc
 精度/Accuracy: $\pm 0.5\%$ FS(标准精度/Standard), $\pm 0.25\%$ FS(提高精度/Improved)
 介质温度/Medium Temperature: -10~85°C
 电气连接/Electrical Connection: 赫斯曼/DIN43650, 直接出线/Cable Outlet
 压力接口/Process Connection: G1/2, M20×1.5等/etc



HPM17-RH防腐压力变送器/HPM17-RH Anti-corrosion Pressure Transmitter

量程范围/Pressure Range: -1~0~0.2~20bar(表压/Gauge), 0~0.2~20bar(绝压/Absolute)
 传感器类型/Sensor Type: 陶瓷压阻/Ceramic Piezoresistive
 供电/Supply: 24VDC
 输出/Output: 4~20mADC, 0/1~5VDC, 0/1~10VDC, RS485等/etc
 精度/Accuracy: $\pm 0.5\%$ FS(标准精度/Standard), $\pm 0.25\%$ FS(提高精度/Improved)
 介质温度/Medium Temperature: -10~85°C
 电气连接/Electrical Connection: 赫斯曼/DIN43650
 压力接口/Process Connection: G1/2, M20×1.5等/etc



HPM188防爆型压力变送器/HPM188 Explosion-proof Pressure Transmitter

量程范围/Pressure Range: -100kPa~0~10kPa~100MPa(表压/Gauge), 0~10kPa~10MPa(绝压/Absolute)
 防爆标志/Explosion-proof Mark: Ex db IIC T6 Gb
 供电/Supply: 24VDC
 输出/Output: 4~20mADC, 0/1~5VDC, 0/1~10V等/etc
 精度/Accuracy: $\pm 0.5\%$ FS(标准精度/Standard), $\pm 0.2\%$ FS(提高精度/Improved)
 工作温度/Working Temperature: -40~60°C
 电气连接/Electrical Connection: 直接出线/Cable Outlet
 压力接口/Process Connection: M20×1.5, 卡盘/Tri-clamp等/etc



HPM189高温型压力变送器/HPM189 High Temperature Resistance Pressure Transmitter

量程范围/Pressure Range: -100kPa~0~2kPa~100MPa(表压/Gauge), 0~10kPa~10MPa(绝压/Absolute)
 传感器类型/Sensor Type: 硅压阻/Silicon Piezoresistive
 供电/Supply: 24VDC
 输出/Output: 4~20mADC, 0/1~5VDC, 0/1~10VDC等/etc
 精度/Accuracy: $\pm 0.5\%$ FS(标准精度/Standard), $\pm 0.2\%$ FS(提高精度/Improved)
 介质温度/Medium Temperature: -40~140°C, -40~200°C(可选/Optional), -40~350°C(可选/Optional)
 电气连接/Electrical Connection: 赫斯曼/DIN43650, 直接出线/Cable Outlet
 压力接口/Process Connection: G1/2, M20×1.5等/etc

性能指标 Performance



HPM18V电容式真空计/HPM18V Capacitive Vacuum Gauge

量程范围/Pressure Range: 0~200Pa~100kPa(绝压/Absolute)
 传感器类型/Sensor Type: 电容薄膜/Capacitance Diaphragm
 供电/Supply: 24VDC
 输出/Output: 4~20mADC, 0/1~5VDC, 0/1~10VDC, RS485等/etc
 精度/Accuracy: $\pm 0.1\%FS$ (20kPa, 100kPa), $\pm 0.25\%FS$ (2kPa, 5kPa, 10kPa), $\pm 0.5\%FS$ (500Pa, 1kPa), $\pm 1.5\%FS$ (200Pa)
 介质温度/Medium Temperature: -40~125°C
 电气连接/Electrical Connection: 直接出线/Cable Outlet, 赫斯曼/DIN43650, M12×1
 压力接口/Process Connection: ISO-KF, Tube, VCR等/etc



HPM10V压阻式真空计/HPM10V Piezoresistive Vacuum Gauge

量程范围/Pressure Range: 0~10kPa...200kPa(绝压/Absolute)
 传感器类型/Sensor Type: 硅压阻/Silicon Piezoresistive
 供电/Supply: 24VDC
 输出/Output: 4~20mADC, 0/1~5VDC, 0/1~10VDC, RS485等/etc
 精度/Accuracy: $\pm 0.25\%FS$ (典型精度) $\pm 0.1\%FS$ (提高精度) *仅限量程 $P \geq 35kPa$
 介质温度/Medium Temperature: -40~100°C
 电气连接/Electrical Connection: 直接出线/Cable Outlet, 赫斯曼/DIN43650, M12×1
 压力接口/Process Connection: ISO-KF, Tube, VCR等/etc



HPM1500溅射薄膜型压力变送器/HPM1500 Sputtering Film Pressure Transmitter

量程范围/Pressure Range: 0~1~200MPa(表压/Gauge)
 传感器类型/Sensor Type: 溅射薄膜/Sputtering Film
 供电/Supply: 24VDC
 输出/Output: 4~20mADC, 0/1~5VDC, 0/1~10VDC等/etc
 精度/Accuracy: $\pm 0.5\%FS$
 介质温度/Medium Temperature: -40~125°C
 电气连接/Electrical Connection: M12×1, 赫斯曼/DIN43650, 直接出线/Cable Outlet
 压力接口/Process Connection: G1/4, G1/2等/etc



HPM1510微熔型压力变送器/HPM1510 Micro Molten Pressure Transmitter

量程范围/Pressure Range: 0~3.5~1000bar(表压/Gauge)
 传感器类型/Sensor Type: 微熔/Micro Molten
 供电/Supply: 24VDC
 输出/Output: 4~20mADC, 0/1~5VDC, 0/1~10VDC等/etc
 精度/Accuracy: $\pm 0.25\%FS$
 介质温度/Medium Temperature: -40~125°C
 电气连接/Electrical Connection: M12×1, 赫斯曼/DIN43650, 直接出线/Cable Outlet, 派克/Packard
 压力接口/Process Connection: G1/4, G1/2等/etc



HPM129A高温熔体压力变送器/HPM129A High-temperature Melt Pressure Transmitter

量程范围/Pressure Range: 0~3.5MPa~150MPa
 供电/Supply: 24VDC
 输出/Output: 4~20mADC, 0~10VDC等/etc
 精度/Accuracy: $\pm 1.0\%FS$ (典型/Typical), $\pm 0.5\%FS$ (可选/Optional)
 介质温度/Medium Temperature: 最高/Max 400°C
 电气连接/Electrical Connection: 航插/Aviation Plug Connector
 压力接口/Process Connection: 1/2"-20UNF, M14×1.5, M18×1.5等/etc
 材料/Material: 17-4PH或15-5PH

性能指标 Performance



HPM1600高温型压力变送器/HPM1600 High Temperature Resistance Pressure Transmitter

量程范围/Pressure Range: -100kPa~0~4kPa~260MPa(表压/Gauge), 0~10kPa~60MPa(绝压/Absolute)
 传感器类型/Sensor Type: 蓝宝石/Sapphire
 供电/Supply: 24VDC
 输出/Output: 4~20mADC, 0/1~5VDC, 0/1~10VDC等/etc
 精度/Accuracy: $\pm 0.1\%FS$
 介质温度/Medium Temperature: -65~150°C
 电气连接/Electrical Connection: 赫斯曼/DIN43650, 直接出线/Cable Outlet, M12×1
 压力接口/Process Connection: M20×1.5



HPM1610油田泥浆专用压力变送器/HPM1610 Oilfield And Mud Dedicated Pressure Transmitter

量程范围/Pressure Range: 0~20MPa~80MPa(表压/Gauge)
 传感器类型/Sensor Type: 蓝宝石/Sapphire
 供电/Supply: 24VDC
 输出/Output: 4~20mADC, 0/1~5VDC, 0/1~10VDC等/etc
 精度/Accuracy: $\pm 0.2\%FS$
 介质温度/Medium Temperature: -50~150°C
 电气连接/Electrical Connection: 赫斯曼/DIN43650, 直接出线/Cable Outlet, M12×1
 压力接口/Process Connection: M20×1.5



HPM1660平膜高温型压力变送器/HPM1660 Flat Diaphragm And High-temperature Resistant Pressure Transmitter

量程范围/Pressure Range: 0~0.2MPa~10MPa(表压/Gauge)
 传感器类型/Sensor Type: 蓝宝石/Sapphire
 供电/Supply: 24VDC
 输出/Output: 4~20mADC, 0/1~5VDC, 0/1~10VDC等/etc
 精度/Accuracy: $\pm 0.2\%FS$
 介质温度/Medium Temperature: -40~200°C
 电气连接/Electrical Connection: 赫斯曼/DIN43650, 直接出线/Cable Outlet, M12×1
 压力接口/Process Connection: M27×2



HPM1680井下专用压力变送器/HPM1680 Downhole Dedicated Pressure Transmitter

量程范围/Pressure Range: 0~0.7MPa~70MPa(表压/Gauge, 绝压/Absolute)
 传感器类型/Sensor Type: 蓝宝石/Sapphire或硅压阻/Silicon Piezoresistive
 供电/Supply: 24VDC
 输出/Output: 4~20mADC
 精度/Accuracy: $\pm 0.5\%FS$
 介质温度/Medium Temperature: -40~80°C
 电气连接/Electrical Connection: 钢丝电缆直接出线/Steel Wire Cable Outlet
 压力接口/Process Connection: 液态引孔/Guide Hole



HPM1900高压型压力变送器/HPM1900 High-pressure Type Pressure Transmitter

量程范围/Pressure Range: 0~40~600MPa
 传感器类型/Sensor Type: 金属应变/Metal Strain
 供电/Supply: 24VDC
 输出/Output: 4~20mADC
 精度/Accuracy: $\pm 0.5\%FS$
 介质温度/Medium Temperature: -10~85°C
 电气连接/Electrical Connection: 赫斯曼/DIN43650, 直接出线/Cable Outlet, 航插/Aviation Plug Connector
 压力接口/Process Connection: M20×1.5等/etc

性能指标 Performance



HPM231型压力变送器/HPM231 Pressure Transmitter

量程范围/Pressure Range: -100kPa~0~200Pa~100kPa(表压/Gauge)
 测量介质/Measured Medium: 干燥和洁净气体/Dry And Clean Gas
 供电/Supply: 24VDC
 输出/Output: 4~20mADC
 精度/Accuracy: $\pm 0.5\%FS(\geq 1kPa)$, $\pm 1.0\%FS(< 1kPa)$
 介质温度/Medium Temperature: -40~85°C
 电气连接/Electrical Connection: 直接出线/Cable Outlet
 压力接口/Process Connection: 气管连接/Air Tube



HPM240智能数显压力变送器/HPM240 Pressure Transmitter With Intelligent Digital Display

量程范围/Pressure Range: -100kPa~0~1kPa~100MPa(表压/Gauge), 0~20kPa~10MPa(绝压/Absolute)
 传感器类型/Sensor Type: 硅压阻/Silicon Piezoresistive
 供电/Supply: 24VDC
 输出/Output: 4~20mADC等/etc
 精度/Accuracy: $\pm 0.5\%FS$ (典型/Typical), $\pm 0.2\%FS$ (可选/Optional)
 工作温度/Working Temperature: -30~85°C
 电气连接/Electrical Connection: M20×1.5 缆塞(壳体内带接线端子)/M20×1.5 Cable Entry
 压力接口/Process Connection: M20×1.5, G1/2等/etc



HPM260型压力变送器/HPM260 Pressure Transmitter

量程范围/Pressure Range: -100kPa~0~1kPa~100MPa(表压/Gauge), 0~20kPa~10MPa(绝压/Absolute)
 传感器类型/Sensor Type: 硅压阻/Silicon Piezoresistive
 供电/Supply: 24VDC
 输出/Output: 4~20mADC等/etc
 精度/Accuracy: $\pm 0.5\%FS$ (典型/Typical), $\pm 0.2\%FS$ (可选/Optional)
 工作温度/Working Temperature: -30~85°C
 电气连接/Electrical Connection: M12×1
 压力接口/Process Connection: M20×1.5, G1/2等/etc



HPM261型压力变送器/HPM261 Pressure Transmitter

量程范围/Pressure Range: -100kPa~0~1kPa~100MPa(表压/Gauge), 0~20kPa~10MPa(绝压/Absolute)
 传感器类型/Sensor Type: 硅压阻/Silicon Piezoresistive
 供电/Supply: 24VDC
 输出/Output: 4~20mADC等/etc
 精度/Accuracy: $\pm 0.5\%FS$ (典型/Typical), $\pm 0.2\%FS$ (可选/Optional)
 工作温度/Working Temperature: -30~85°C
 电气连接/Electrical Connection: 缆塞(壳体内带接线端子)/Cable Entry
 压力接口/Process Connection: M20×1.5, G1/2等/etc



HPM280防护型压力变送器/HPM280 Protective Pressure Transmitter

量程范围/Pressure Range: -100kPa~0~1kPa~100MPa(表压/Gauge), 0~20kPa~10MPa(绝压/Absolute)
 传感器类型/Sensor Type: 硅压阻/Silicon Piezoresistive
 供电/Supply: 24VDC
 输出/Output: 4~20mADC等/etc
 精度/Accuracy: $\pm 0.5\%FS$ (典型/Typical), $\pm 0.2\%FS$ (可选/Optional)
 工作温度/Working Temperature: -30~85°C
 电气连接/Electrical Connection: 缆塞(壳体内带接线端子)/Cable Entry
 压力接口/Process Connection: M20×1.5, G1/2等/etc

性能指标 Performance



HPM285智能型压力变送器/HPM285 Intelligent Pressure Transmitter

量程范围/Pressure Range: -100kPa~0~1kPa~100MPa(表压/Gauge), 0~20kPa~10MPa(绝压/Absolute)
 传感器类型/Sensor Type: 硅压阻/Silicon Piezoresistive
 供电/Supply: 24VDC
 输出/Output: RS485, 4~20mADC+HART
 精度/Accuracy: $\pm 0.5\%FS$ (典型/Typical), $\pm 0.2\%FS$ (可选/Optional)
 工作温度/Working Temperature: -30~85°C
 电气连接/Electrical Connection: 缆塞(壳体内带接线端子)/Cable Entry
 压力接口/Process Connection: M20×1.5, G1/2等/etc



HPM288隔爆型压力变送器/HPM288 Explosion-proof Pressure Transmitter

量程范围/Pressure Range: -100kPa~0~1kPa~100MPa(表压/Gauge), 0~20kPa~10MPa(绝压/Absolute)
 防爆标志/Explosion Proof Mark: Ex db IIC T6 Gb; Ex tb IIIC T80°C Db
 供电/Supply: 24VDC
 输出/Output: 4~20mADC等/etc
 精度/Accuracy: $\pm 0.5\%FS$ (典型/Typical), $\pm 0.2\%FS$ (可选/Optional)
 工作温度/Working Temperature: -40~60°C
 电气连接/Electrical Connection: 缆塞(壳体内带接线端子)/Cable Entry
 压力接口/Process Connection: 螺纹、卡盘或法兰/Screw Thread, Tri-clamp or Flange



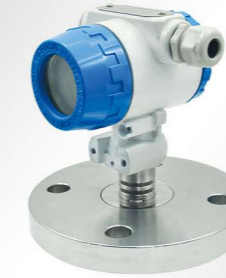
HPM289高温防护型压力变送器/HPM289 High Temperature Resistance Pressure Transmitter

量程范围/Pressure Range: -100kPa~0~1kPa~100MPa(表压/Gauge), 0~20kPa~10MPa(绝压/Absolute)
 传感器类型/Sensor Type: 硅压阻/Silicon Piezoresistive
 供电/Supply: 24VDC
 输出/Output: 4~20mADC等/etc
 精度/Accuracy: $\pm 0.5\%FS$ (典型/Typical), $\pm 0.2\%FS$ (可选/Optional)
 介质温度/Medium Temperature: -40~140°C, -40~200°C(可选/Optional)
 电气连接/Electrical Connection: 缆塞(壳体内带接线端子)/Cable Entry
 压力接口/Process Connection: M20×1.5, G1/2等/etc



HPM27防腐型压力变送器/HPM27 Anti-corrosion Pressure Transmitter

量程范围/Pressure Range: -1~0~0.2~20bar(表压/Gauge), 0~0.2~20bar(绝压/Absolute)
 传感器类型/Sensor Type: 陶瓷压阻/Ceramic Piezoresistive
 供电/Supply: 24VDC
 输出/Output: 4~20mADC等/etc
 精度/Accuracy: $\pm 0.5\%FS$ (标准精度/Standard), $\pm 0.25\%FS$ (提高精度/Improved)
 工作温度/Working Temperature: -30~85°C
 电气连接/Electrical Connection: 缆塞(壳体内带接线端子)/Cable Entry
 压力接口/Process Connection: M20×1.5, G1/2等/etc



HPM20F法兰隔膜型压力变送器/HPM20F Flange Diaphragm Pressure Transmitter

量程范围/Pressure Range: 0~20kPa~10MPa
 传感器类型/Sensor Type: 硅压阻/Silicon Piezoresistive
 供电/Supply: 24VDC
 输出/Output: 4~20mADC等/etc
 精度/Accuracy: $\pm 0.5\%FS$
 工作温度/Working Temperature: -30~85°C
 电气连接/Electrical Connection: 缆塞(壳体内带接线端子)/Cable Entry
 压力接口/Process Connection: 法兰/Flange

性能指标 Performance



HPM560/HPM560J智能压力开关/HPM560/HPM560J Intelligent Pressure Switch

量程范围/Pressure Range: -100kPa~0~1kPa~100MPa(表压/Gauge), 0~10kPa~10MPa(绝压/Absolute)
 传感器类型/Sensor Type: 硅压阻/Silicon Piezoresistive
 供电/Supply: 24VDC
 输出/Output: 4~20mADC, 2路继电器/Two Way Relay, 2路NPN/PNP/Two Way NPN/PNP
 精度/Accuracy: ±0.5%FS
 开关动作点/Switch Action Point: 可设置/Settable
 电气连接/Electrical Connection: M12×1, 赫斯曼/DIN43650, 航插/Aviation Plug Connector
 压力接口/Process Connection: 螺纹或卡盘等/Screw Thread or Tri-Clamp etc



HPM5623/HPM5623J型智能型陶瓷压力开关/HPM5623/HPM5623J Intelligent Ceramic Pressure Switch

量程范围/Pressure Range: -1~0~0.2~20bar(表压/Gauge), 0~0.2~20bar(绝压/Absolute)
 传感器类型/Sensor Type: 陶瓷压阻/Ceramic Piezoresistive
 供电/Supply: 24VDC
 输出/Output: 4~20mADC, 2路继电器/Two Way Relay, 2路NPN/PNP/Two Way NPN/PNP
 精度/Accuracy: ±0.5%FS
 开关动作点/Switch Action Point: 可设置/Settable
 电气连接/Electrical Connection: M12×1, 赫斯曼/DIN43650, 航插/Aviation Plug Connector
 压力接口/Process Connection: 卡盘/Tri-Clamp



HPM530/HPM530J差压型压力开关/HPM530/HPM530J Differential Pressure Switch

量程范围/Pressure Range: -100kPa~0~10kPa~3.5MPa
 传感器类型/Sensor Type: 硅压阻/Silicon Piezoresistive
 供电/Supply: 24VDC
 输出/Output: 4~20mADC, 2路继电器/Two Way Relay, 2路NPN/PNP/Two Way NPN/PNP
 精度/Accuracy: ±0.5%FS
 开关动作点/Switch Action Point: 可设置/Settable
 电气连接/Electrical Connection: M12×1, 赫斯曼/DIN43650, 航插/Aviation Plug Connector
 压力接口/Process Connection: M20×1.5, G1/2等/etc



HPM5601智能压力开关/HPM5601 Intelligent Pressure Switch

量程范围/Pressure Range: -100kPa~0~1kPa~100MPa(表压/Gauge), 0~10kPa~10MPa(绝压/Absolute)
 传感器类型/Sensor Type: 硅压阻/Silicon Piezoresistive
 供电/Supply: 24VDC
 输出/Output: 4~20mADC, 2×PNP
 精度/Accuracy: ±0.5%FS
 开关动作点/Switch Action Point: 可设置/Settable
 电气连接/Electrical Connection: M12×1, 赫斯曼/DIN43650
 压力接口/Process Connection: 螺纹或卡盘等/Screw Thread or Tri-Clamp etc



HPM5100型压力开关/HPM5100 Pressure Switch

量程范围/Pressure Range: -100kPa~0~1kPa~100MPa(表压/Gauge), 0~10kPa~10MPa(绝压/Absolute)
 传感器类型/Sensor Type: 硅压阻/Silicon Piezoresistive
 供电/Supply: 24VDC
 输出/Output: 4~20mADC, 1路继电器/One Way Relay, 2路NPN/PNP/Two Way NPN/PNP
 精度/Accuracy: ±0.5%FS
 开关动作点/Switch Action Point: 可设置/Settable
 电气连接/Electrical Connection: M12×1 5P
 压力接口/Process Connection: 螺纹或卡盘等/Screw Thread or Tri-Clamp etc

性能指标 Performance



HPM510/510J小型不锈钢压力开关/HPM510/510J Compact Stainless Steel Pressure Switch

量程范围/Pressure Range: -100kPa~0~1kPa~100MPa(表压/Gauge), 0~10kPa~10MPa(绝压/Absolute)
 传感器类型/Sensor Type: 硅压阻/Silicon Piezoresistive
 供电/Supply: 24VDC
 输出/Output: 1路继电器或2路NPN/PNP/One Way Relay or Two Way NPN/PNP
 精度/Accuracy: ±0.5%FS
 工作温度/Working Temperature: -40~80°C
 电气连接/Electrical Connection: 直接出线/Cable Outlet, 赫斯曼/DIN43650, M12×1
 压力接口/Process Connection: M20×1.5, G1/2等/etc



HPM520型智能压力开关/HPM520 Intelligent Pressure Switch

量程范围/Pressure Range: -100kPa~0~1kPa~100MPa(表压/Gauge), 0~10kPa~10MPa(绝压/Absolute)
 表盘大小/Dial Size: Φ100
 供电/Supply: 24VDC, 220VAC
 输出/Output: 4~20mADC+2路继电器/Two Way Relay
 精度/Accuracy: ±0.5%FS
 开关动作点/Switch Action Point: 可设置/Settable
 电气连接/Electrical Connection: 直接出线/Cable Outlet
 压力接口/Process Connection: 螺纹或卡盘等/Screw Thread or Tri-clamp etc



HPM288隔爆型压力开关/HPM288 Explosion-proof Pressure Switch

量程范围/Pressure Range: -100kPa~0~1kPa~100MPa(表压/Gauge), 0~10kPa~10MPa(绝压/Absolute)
 防爆标志/Explosion-proof Mark: Ex d IIC T6 Gb
 供电/Supply: 24VDC
 输出/Output: 4~20mADC+2路继电器/Two Way Relay
 精度/Accuracy: ±0.5%FS
 开关动作点/Switch Action Point: 可设置/Settable
 电气连接/Electrical Connection: 缆塞(壳体内带接线端子)/Cable Entry
 压力接口/Process Connection: 螺纹、卡盘或法兰/Screw Thread, Tri-Clamp or Flange



HPM5010智能压力控制器/HPM5010 Intelligent Pressure Controller

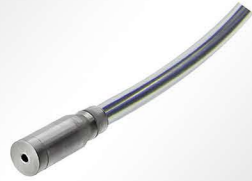
量程范围/Pressure Range: -100kPa~0~1kPa~100MPa(表压/Gauge), 0~10kPa~10MPa(绝压/Absolute)
 传感器类型/Sensor Type: 硅压阻/Silicon Piezoresistive
 供电/Supply: 24VDC
 输出/Output: 2×PNP+4~20mADC+RS485 或者/or 2×PNP+0~5/10VDC+RS485
 精度/Accuracy: ±0.5%FS
 开关动作点/Switch Action Point: 可设置/Settable
 电气连接/Electrical Connection: M12×1
 压力接口/Process Connection: M20×1.5, G1/2等/etc



HPM501精巧型不锈钢压力开关/HPM501 Compact Stainless Steel Pressure Switch

量程范围/Pressure Range: -100kPa~0~10kPa~60MPa(表压/Gauge), 0~10kPa~10MPa(绝压/Absolute)
 传感器类型/Sensor Type: 硅压阻/Silicon Piezoresistive
 供电/Supply: 24VDC
 输出/Output: 2路PNP / Two Way PNP
 精度/Accuracy: ±0.25%FS
 工作温度/Working Temperature: -40~80°C
 电气连接/Electrical Connection: M12×1
 压力接口/Process Connection: M20×1.5, G1/2等/etc

性能指标 Performance



HPM9141微型高频压力传感器/HPM9141 Miniature High-frequency Pressure Sensor

量程范围/Pressure Range: 0~10kPa~2.5MPa(表压/Gauge)
 传感器类型/Sensor Type: 硅压阻/Silicon Piezoresistive
 供电/Supply: 12~24VDC或±12~15VDC
 输出/Output: 0~5VDC, 0~10VDC, 1~5VDC等/etc
 精度/Accuracy: ±0.5%FS(典型/Typical), ±0.25%FS(可选/Optional)
 膜片固有频率/Natural Frequency of Sensor: 125~300kHz
 带宽/Bandwidth: 0~1/5固有频率/Natural Frequency(带放大电路/Amplifier Only)
 工作温度/Working Temperature: -40~85°C
 电气连接/Electrical Connection: 直接出线/Cable Outlet, 航空插头/Aviation Plug Connector
 尺寸/Size: Φ4mm



HPM9161微型高频压力传感器/HPM9161 Miniature High-frequency Pressure Sensor

量程范围/Pressure Range: 0~2kPa~2.5MPa(表压/Gauge)
 传感器类型/Sensor Type: 硅压阻/Silicon Piezoresistive
 供电/Supply: 12~24VDC或±12~15VDC
 输出/Output: 0~5V, 0~10V, 1~5V等/etc
 精度/Accuracy: ±0.5%FS(典型/Typical), ±0.25%FS(可选/Optional)
 膜片固有频率/Natural Frequency of Sensor: 125~300kHz
 带宽/Bandwidth: 0~1/5固有频率/Natural Frequency(带放大电路/Amplifier Only)
 工作温度/Working Temperature: -40~85°C
 电气连接/Electrical Connection: 直接出线/Cable Outlet, 航空插头/Aviation Plug Connector
 尺寸/Size: Φ6mm



HPM9162微型高频压力传感器/HPM9162 Miniature High-frequency Pressure Sensor

量程范围/Pressure Range: 0~10kPa~2.5MPa(表压/Gauge)
 传感器类型/Sensor Type: 硅压阻/Silicon Piezoresistive
 供电/Supply: 12~24VDC或±12~15VDC
 输出/Output: 0~5VDC, 0~10VDC, 1~5V等/etc
 精度/Accuracy: ±0.5%FS(典型/Typical), ±0.25%FS(可选/Optional)
 膜片固有频率/Natural Frequency of Sensor: 125~300kHz
 带宽/Bandwidth: 0~1/5固有频率/Natural Frequency(带放大电路/Amplifier Only)
 工作温度/Working Temperature: -40~85°C
 电气连接/Electrical Connection: 直接出线/Cable Outlet, 航空插头/Aviation Plug Connector
 压力接口/Process Connection: M6×1



HPM9183T微型高频压力传感器/HPM9183T Miniature High-frequency Pressure Sensor

量程范围/Pressure Range: 0~2.5MPa~30MPa(表压/Gauge)
 传感器类型/Sensor Type: 硅压阻/Silicon Piezoresistive
 供电/Supply: 12~24VDC或±12~15VDC
 输出/Output: 0~5V, 0~10V, 1~5V等/etc
 精度/Accuracy: ±0.5%FS(典型/Typical), ±0.25%FS(可选/Optional)
 膜片固有频率/Natural Frequency of Sensor: 260~580kHz
 带宽/Bandwidth: 0~1/5固有频率/Natural Frequency(带放大电路/Amplifier Only)
 工作温度/Working Temperature: -40~85°C
 电气连接/Electrical Connection: 直接出线/Cable Outlet, 航空插头/Aviation Plug Connector
 压力接口/Process Connection: M8×1



HPM9220土压力高频压力传感器/HPM9220 Earth Pressure High Frequency Pressure Sensor

量程范围/Pressure Range: 0~200kPa~30MPa(表压/Gauge)
 传感器类型/Sensor Type: 硅压阻/Silicon Piezoresistive
 供电/Supply: 12~24VDC或±12~15VDC
 输出/Output: 0~5V, 0~10V, 1~5V等/etc
 精度/Accuracy: ±0.5%FS(典型/Typical), ±0.25%FS(可选/Optional)
 膜片固有频率/Natural Frequency of Sensor: 290~680kHz
 带宽/Bandwidth: 0~1/3固有频率/Natural Frequency(带放大电路/Amplifier Only)
 工作温度/Working Temperature: -40~85°C
 电气连接/Electrical Connection: 直接出线/Cable Outlet, 航空插头/Aviation Plug Connector
 尺寸/Size: Φ20×10mm

性能指标 Performance



HPM9361渗透高频压力传感器/HPM9361 Permeation High Frequency Pressure Sensor

量程范围/Pressure Range: 0~2kPa~2.5MPa(表压/Gauge)
 传感器类型/Sensor Type: 硅压阻/Silicon Piezoresistive
 供电/Supply: 12~24VDC或±12~15VDC
 输出/Output: 0~5V, 0~10V, 1~5V等/etc
 精度/Accuracy: ±0.25%FS(典型/Typical), ±0.1%FS(可选/Optional)
 膜片固有频率/Natural Frequency of Sensor: 125~300kHz
 带宽/Bandwidth: 0~1/5固有频率/Natural Frequency(带放大电路/Amplifier Only)
 工作温度/Working Temperature: 0~85°C
 电气连接/Electrical Connection: 直接出线/Cable Outlet, 航空插头/Aviation Plug Connector
 尺寸/Size: Φ6×22mm



HPM9381渗透高频压力传感器/HPM9381 Permeation High Frequency Pressure Sensor

量程范围/Pressure Range: 0~2kPa~2.5MPa(表压/Gauge)
 传感器类型/Sensor Type: 硅压阻/Silicon Piezoresistive
 供电/Supply: 12~24VDC或±12~15VDC
 输出/Output: 0~5V, 0~10V, 1~5V等/etc
 精度/Accuracy: ±0.25%FS(典型/Typical), ±0.1%FS(可选/Optional)
 膜片固有频率/Natural Frequency of Sensor: 125~300kHz
 带宽/Bandwidth: 0~1/5固有频率/Natural Frequency(带放大电路/Amplifier Only)
 工作温度/Working Temperature: 0~85°C
 电气连接/Electrical Connection: 直接出线/Cable Outlet, 航空插头/Aviation Plug Connector
 尺寸/Size: Φ8×17.5mm



HPM9400高频压力传感器/HPM9400 High Frequency Pressure Sensor

量程范围/Pressure Range: 0~200kPa~100MPa(表压/Gauge)
 传感器类型/Sensor Type: 硅压阻/Silicon Piezoresistive
 供电/Supply: 12~24VDC或±12~15VDC
 输出/Output: 0~5V, 0~10V, 1~5V等/etc
 精度/Accuracy: ±0.5%FS(典型/Typical), ±0.25%FS(可选/Optional)
 膜片固有频率/Natural Frequency of Sensor: 290kHz~1MHz
 带宽/Bandwidth: 高达150kHz/Up To 150kHz(带放大电路/Amplifier Only)
 工作温度/Working Temperature: -40~100°C
 电气连接/Electrical Connection: 直接出线/Cable Outlet, 航空插头/Aviation Plug Connector
 压力接口/Process Connection: M20×1.5, 定制/Customization



HPM9550水冷动态高频压力传感器/HPM9550 Water-cooled High-frequency Pressure Sensor

量程范围/Pressure Range: 0~200kPa~30MPa(表压/Gauge)
 传感器类型/Sensor Type: 硅压阻/Silicon Piezoresistive
 供电/Supply: 12~24VDC或±12~15VDC
 输出/Output: 0~5V, 0~10V, 1~5V等/etc
 精度/Accuracy: ±1%FS(典型/Typical), ±0.5%FS(可选/Optional)
 膜片固有频率/Natural Frequency of Sensor: 290kHz~680kHz
 带宽/Bandwidth: 0~1/5固有频率/Natural Frequency(带放大电路/Amplifier Only)
 介质温度/Medium Temperature: -10~250°C
 电气连接/Electrical Connection: 直接出线/Cable Outlet, 航空插头/Aviation Plug Connector
 压力接口/Process Connection: M20×1.5, 定制/Customization



HPM9600铅笔型自由场压力传感器/HPM9600 Pencil shaped Free Field Pressure Sensor

量程范围/Pressure Range: 0~200kPa~30MPa(表压/Gauge)
 传感器类型/Sensor Type: 硅压阻/Silicon Piezoresistive
 供电/Supply: 12~24VDC或±12~15VDC
 输出/Output: 0~5V, 0~10V, 1~5V等/etc
 精度/Accuracy: ±0.5%FS(典型/Typical), ±0.25%FS(可选/Optional)
 膜片固有频率/Natural Frequency of Sensor: 290kHz~680kHz
 带宽/Bandwidth: 0~1/3固有频率/Natural Frequency(带放大电路/Amplifier Only)
 介质温度/Medium Temperature: -40~115°C
 电气连接/Electrical Connection: 直接出线/Cable Outlet, 航空插头/Aviation Plug Connector
 尺寸/Size: Φ22.1×407mm, 定制/Customization

性能指标 Performance



HP10LC低功耗数字压力传感器/HP10LC Low-power Digital Pressure Sensor
 量程范围/Pressure Range: -100kPa~0~10kPa~100MPa(表压/Gauge), 0~20kPa~10MPa(绝压/Absolute)
 精度/Accuracy: ±0.5%FS
 供电/Supply: 3~5.5VDC
 输出/Output: I²C
 正常模式工作电流/Normal Mode Current: ≤3mA
 睡眠模式工作电流/Sleep Mode Current: ≤100nA
 电气连接/Electrical Connection: 直接出线或按客户要求/Wire or Customized
 尺寸/Size: Φ19mm



HP10BL低功耗压力传感器/HP10BL Low-power Pressure Sensor
 量程范围/Pressure Range: -100kPa~0~10kPa~100MPa(表压/Gauge), 0~20kPa~10MPa(绝压/Absolute)
 压力过载/Pressure Overload: 150%FS
 精度/Accuracy: ±0.5%FS
 供电/Supply: 外接锂电池/External Li-Battery
 输出/Output: I²C、RS485、0.5~2.5V等/etc
 电气连接/Electrical Connection: 直接出线或按客户要求/Wire or Customized
 上部连接螺纹/Upper Connecting Thread: M25×1或M27×2
 压力接口/Process Connection: G1/4, G1/2, M20×1.5等/etc



HPM1300L低功耗压力传感器/HPM1300L Low-power Pressure Sensor
 量程范围/Pressure Range: -100kPa...0~10kPa...40MPa(表压/Gauge), 0~20kPa...10MPa(绝压/Absolute)
 传感器类型/Sensor Type: 硅压阻/Silicon Piezoresistive
 压力过载/Pressure Overload: 150%FS
 精度/Accuracy: ±0.5%FS(标准精度/Standard), ±0.25%FS(提高精度/Improved)
 供电/Supply: 外接锂电池/External Li-Battery
 输出/Output: I²C、RS485、0.5~2.5V等/etc
 电气连接/Electrical Connection: 直接出线/Cable Outlet, 赫斯曼/DIN43650, M12×1
 压力接口/Process Connection: G1/4, G1/2, M20×1.5等/etc



HPM1330L低功耗压力传感器/HPM1330L Low-power Pressure Sensor
 量程范围/Pressure Range: 0~1~50bar(表压/Gauge)
 传感器类型/Sensor Type: 陶瓷压阻/Ceramic Piezoresistive
 压力过载/Pressure Overload: 150%FS
 精度/Accuracy: ±1.0%FS(标准精度/Standard), ±0.5%FS(提高精度/Improved)
 供电/Supply: 外接锂电池/External Li-Battery
 输出/Output: I²C、RS485、0.5~2.5V等/etc
 电气连接/Electrical Connection: 直接出线/Cable Outlet
 压力接口/Process Connection: G1/4, G1/2, M20×1.5等/etc



HPM240L低功耗压力传感器/HPM240L Low-power Pressure Sensor
 量程范围/Pressure Range: -100kPa~0~10kPa~100MPa(表压/Gauge), 0~20kPa~10MPa(绝压/Absolute)
 传感器类型/Sensor Type: 硅压阻/Silicon Piezoresistive
 精度/Accuracy: ±0.5%FS(标准精度/Standard), ±0.25%FS(提高精度/Improved)
 供电/Supply: 内置3.6V锂电池/Built In 3.6V Li-Battery
 输出/Output: RS485
 待机电流/Standby Current: <20uA
 电气连接/Electrical Connection: 缆塞(壳体内带接线端子)/Cable Entry
 压力接口/Process Connection: G1/4, G1/2, M20×1.5等/etc

性能指标 Performance



HPM410LC低功耗液位传感器/HPM410LC Low-power Liquid Level Sensor
 量程范围/Pressure Range: 0~0.5~50mHzO
 传感器类型/Sensor Type: 硅压阻/Silicon Piezoresistive
 精度/Accuracy: ±0.5%FS
 供电/Supply: 3.0~5.5VDC
 输出/Output: I²C
 正常模式工作电流/Normal Mode Current: ≤3mA
 睡眠模式工作电流/Sleep Mode Current: ≤100nA
 介质温度/Medium Temperature: -40°C~85°C



HPM410LR低功耗液位传感器/HPM410LR Low-power Liquid Level Sensor
 量程范围/Pressure Range: 0~0.5~500mHzO
 传感器类型/Sensor Type: 硅压阻/Silicon Piezoresistive
 精度/Accuracy: ±0.5%FS
 供电/Supply: 3.1~8VDC
 输出/Output: RS485
 待机电流/Standby Current: <5uA
 介质温度/Medium Temperature: -40°C~85°C
 外壳直径/Housing Diameter: Φ27mm



HPM410LV低功耗液位传感器/HPM410LV Low-power Liquid Level Sensor
 量程范围/Pressure Range: 0~0.5~10mHzO
 传感器类型/Sensor Type: 硅压阻/Silicon Piezoresistive
 精度/Accuracy: ±0.5%FS
 供电/Supply: 3.1~8VDC
 输出/Output: 0.25~1.25V, 0.25~2.25V, 0.5~2.5V等电压信号/Voltage Signal
 工作电流/Working Current: ≤2.5mA
 介质温度/Medium Temperature: -40°C~85°C
 外壳直径/Housing Diameter: Φ27mm



HPM420L低功耗液位传感器/HPM420L Low-power Liquid Level Sensor
 量程范围/Pressure Range: 0~0.5~10mHzO
 传感器类型/Sensor Type: 硅压阻/Silicon Piezoresistive
 精度/Accuracy: ±0.5%FS
 供电/Supply: 内置3.6V锂电池/Built In 3.6V Li-Battery
 输出/Output: RS485
 待机电流/Standby Current: <20uA
 电气连接/Electrical Connection: 缆塞(壳体内带接线端子)/Cable Entry
 介质温度/Medium Temperature: -40°C~100°C



HPTM420L低功耗液位温度一体式传感器/HPTM420L Low-power Integrated Sensor For Liquid Level And Temperature
 液位量程/Liquid Level Range: 0~0.5~10mHzO
 温度量程/Temperature Range: -40~100°C
 精度/Accuracy: ±0.5%FS(Liquid Level), ±0.4°C(Temperature)
 供电/Supply: 内置3.6V锂电池/Built In 3.6V Li-Battery
 输出/Output: RS485
 待机电流/Standby Current: <20uA
 电气连接/Electrical Connection: 缆塞(壳体内带接线端子)/Cable Entry
 探头直径/Probe Diameter: Φ27mm

性能指标 Performance



HPM310微差压变送器/HPM310 Micro Differential Pressure Transmitter

量程范围/Pressure Range: 从±100Pa到±40kPa/From ±100Pa To ±40kPa
 测量介质/Measured Medium: 干燥和洁净气体/Dry And Clean Gas
 传感器类型/Sensor Type: 硅压阻/Silicon Piezoresistive
 精度/Accuracy: ±0.25%FS
 供电/Supply: 24VDC
 输出/Output: 4~20mADC
 电气连接/Electrical Connection: 直接出线/Cable Outlet
 压力接口/Process Connection: Φ8宝塔嘴/Φ8 Air Nozzle



HPM311风压型差压变送器/HPM311 Differential Pressure Transmitter

量程范围/Pressure Range: 从±200Pa到±100kPa/From ±200Pa To ±100kPa
 测量介质/Measured Medium: 干燥和洁净气体/Dry And Clean Gas
 传感器类型/Sensor Type: 硅压阻/Silicon Piezoresistive
 精度/Accuracy: ±0.5%FS
 供电/Supply: 24VDC
 输出/Output: 4~20mADC, 0/1~5VDC, 0/1~10V等/etc
 电气连接/Electrical Connection: 直接出线/Cable Outlet
 压力接口/Process Connection: Φ8宝塔嘴/Φ8 Air Nozzle



HPM3189高温差压变送器/HPM3189 High Temperature Resistant Differential Pressure Transmitter

量程范围/Pressure Range: 从±10kPa到±3.5MPa/From ±10kPa To ±3.5MPa
 测量介质/Measured Medium: 水油气/Water、Oil、Gas
 精度/Accuracy: ±0.5%FS
 供电/Supply: 24VDC
 输出/Output: 4~20mADC, 0/1~5VDC, 0/1~10V等/etc
 介质温度/Medium Temperature: -40°C~130°C
 电气连接/Electrical Connection: 直接出线/Cable Outlet, 赫斯曼/DIN43650, M12×1
 压力接口/Process Connection: M20×1.5, G1/2等/etc



HPM320型差压变送器/HPM320 Differential Pressure Transmitter

量程范围/Pressure Range: 从±10kPa到±3.5MPa/From ±10kPa To ±3.5MPa
 测量介质/Measured Medium: 水油气/Water、Oil、Gas
 精度/Accuracy: ±0.5%FS
 供电/Supply: 24VDC
 输出/Output: 4~20mADC, 0/1~5VDC, 0/1~10V等/etc
 介质温度/Medium Temperature: -40°C~85°C
 电气连接/Electrical Connection: 缆塞(壳体内带接线端子)/Cable Entry
 压力接口/Process Connection: M20×1.5, G1/2等/etc



HAM30多功能微差压变送器/HAM30 Multifunctional Micro Differential Pressure Transmitter

多参量/Multi-parameter: 差压/Differential Pressure, 温度/Temperature, 湿度/Humidity
 差压范围/Differential Pressure Range: 从±25Pa到±50kPa/From ±25Pa To ±50kPa
 温度范围/Temperature Range: -40°C~85°C
 湿度范围/Humidity Range: 0~100%RH
 供电/Supply: 24VDC
 输出/Output: 4~20mADC, 0~5VDC, 0~10VDC, RS485, WIFI
 电气连接/Electrical Connection: 直接出线/Cable Outlet
 压力接口/Process Connection: 宝塔嘴/Pagoda Nozzle

性能指标 Performance



HPTM180温压一体变送器/HPTM180 Temperature And Pressure Integrated Transmitter

压力量程/Pressure Range: 0...50kPa...40MPa(表压/Gauge), 0~50kPa...10MPa(绝压/Absolute)
 温度量程/Temperature Range: -40~100°C
 精度/Accuracy: ±0.5%FS(压力/Pressure), ±0.4°C(温度/Temperature)
 供电/Supply: 24VDC
 输出/Output: 4~20mADC, 0~5VDC, 0~10VDC, RS485
 电气连接/Electrical Connection: 直接出线/Cable Outlet, 赫斯曼/DIN43650, M12×1
 压力接口/Process Connection: G1/2, M20×1.5等/etc
 温度探杆/Temperature Probe Rod: 长度自定义/Length Customized



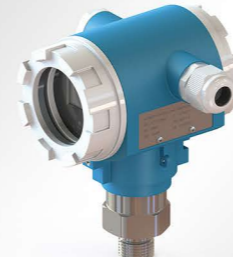
HPTM189高温型温压一体变送器/HPTM189 Temperature And Pressure Integrated Transmitter

压力量程/Pressure Range: 0...50kPa...40MPa(表压/Gauge), 0~50kPa...10MPa(绝压/Absolute)
 温度量程/Temperature Range: -40~200°C
 精度/Accuracy: ±0.5%FS(压力/Pressure), ±0.5°C(温度/Temperature)
 供电/Supply: 24VDC
 输出/Output: 4~20mADC, 0~5VDC, 0~10VDC, RS485
 电气连接/Electrical Connection: 直接出线/Cable Outlet, 赫斯曼/DIN43650, M12×1
 压力接口/Process Connection: G1/2, M20×1.5等/etc
 温度探杆/Temperature Probe Rod: 长度自定义/Length Customized



HPTM182温压一体变送器/HPTM182 Temperature And Pressure Integrated Transmitter

压力量程/Pressure Range: -100kPa...2kPa...25MPa(表压/Gauge), 0~10kPa...10MPa(绝压/Absolute)
 温度量程/Temperature Range: -40~100°C
 精度/Accuracy: ±0.5%(压力/Pressure), ±0.4°C(温度/Temperature)
 供电/Supply: 24VDC
 输出/Output: 4~20mADC, 0~5VDC, 0~10V, RS485
 电气连接/Electrical Connection: 直接出线/Cable Outlet, 赫斯曼/DIN43650, M12×1
 压力接口/Process Connection: G1/4, NPT1/4, G1/2, M20×1.5等/etc
 温度探杆/Temperature Probe Rod: 长度自定义/Length Customized



HPTM240数显型温压一体变送器/HPTM240 Temperature And Pressure Integrated Transmitter With Display

压力量程/Pressure Range: 0~50kPa...40MPa(表压/Gauge), 0~50kPa...10MPa(绝压/Absolute)
 温度量程/Temperature Range: -40~100°C
 精度/Accuracy: ±0.5%(压力/Pressure), ±0.4°C(温度/Temperature)
 供电/Supply: 24VDC、5VDC或内置3.6V锂电池/Built In 3.6V Li-Battery
 输出/Output: RS485
 电气连接/Electrical Connection: 缆塞(壳体内带接线端子)/Cable Entry
 压力接口/Process Connection: G1/2, M20×1.5等/etc



HPTM410温压一体投入式变送器/HPTM410 Temperature And Pressure Integrated Submersible Transmitter

液位量程/Liquid Level Range: 0~1...500mH₂O
 温度量程/Temperature Range: -40~80°C
 精度/Accuracy: ±0.5%FS(液位/Liquid Level), ±0.4°C(温度/Temperature)
 供电/Supply: 24VDC
 输出/Output: 4~20mADC, 0~5VDC, 0~10VDC, RS485
 外壳材料/Housing Material: 304、316L 或Ti
 探头直径/Probe Diameter: Φ27mm
 电缆材料/Cable Material: 丁腈/NBR, 聚氨酯/PU, 氟塑料/Fluoroplastics

性能指标 Performance



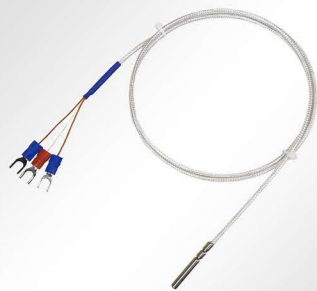
WZ工业用热电阻/WZ Industrial Thermistor

测温范围/Temperature Range: -200~500°C
 测温元件/Measuring Element: PT100
 精度/Accuracy: $\pm(0.15+0.002 | t |)$ (A级/Level), $\pm(0.3+0.005 | t |)$ (B级/Level)
 测量端形式/Measurement End Form: 两线制或三线制/Two-Wire or Three-Wire
 保护管材料/Protection Tube Material: 304、316L
 保护管直径/Protection Tube Diameter: $\Phi 6\text{mm}$, $\Phi 8\text{mm}$, $\Phi 10\text{mm}$, $\Phi 12\text{mm}$ 等/etc
 电气连接/Electrical Connection: 缆塞(壳体内带接线端子)/Cable Entry
 过程连接/Process Connection: M27×2, M20×1.5等/etc



HTP150表面型温度传感器/HTP150 Surface Temperature Sensor

测温范围/Temperature Range: 0~200°C
 测温元件/Measuring Element: PT100
 精度/Accuracy: $\pm 1.5\Omega$
 测量端形式/Measurement End Form: 两线制、三线制或四线制/Two-Wire、Three-Wire or Four-Wire
 外形尺寸/Size: 45mm*16mm*16mm
 安装形式/Mounting Type: 螺栓固定或磁吸/Bolt or Magnet
 电气连接/Electrical Connection: 直接出线/Cable Outlet
 外壳材料/Housing Material: 304、316L



HTP410防水型温度传感器/HTP410 Waterproof Temperature Sensor

测温范围/Temperature Range: -50~100°C, -50~150°C, -50~200°C
 测温元件/Measuring Element: PT100
 精度/Accuracy: $\pm(0.15+0.002 | t |)$ (A级/Level), $\pm(0.3+0.005 | t |)$ (B级/Level)
 测量端形式/Measurement End Form: 两线制或三线制/Two-Wire or Three-Wire
 安装形式/Mounting Type: 投入式/Drop-Type
 电气连接/Electrical Connection: 直接出线/Cable Outlet
 外壳材料/Housing Material: 304、316L
 电缆材料/Cable Material: 硅胶导线/Silicone, 氟塑料导线/Fluoroplastic



HTM108精巧型温度变送器/HTM108 Compact Temperature transmitter

测温范围/Temperature Range: -200~500°C
 测温元件/Measuring Element: PT100
 供电/Supply: 24VDC
 输出/Output: 4~20mADC, 0~5VDC, 0~10VDC等/etc
 精度/Accuracy: $\pm 0.5\%FS$ (典型/Typical), $\pm 0.2\%FS$ (可选/Optional)
 电气连接/Electrical Connection: 赫斯曼/DIN43650, 直接出线/Cable Outlet, M12×1
 过程连接/Process Connection: M20×1.5, G1/2等/etc
 探杆材料/Probe Material: 304、316L



HTM128防爆型温度变送器/HTM128 Explosion-proof Temperature Transmitter

测温范围/Temperature Range: -200~500°C
 防爆标志/Explosion-proof Mark: Ex db IIC T6 Gb
 测温元件/Measuring Element: PT100
 供电/Supply: 24VDC
 输出/Output: 4~20mADC, 0~10VDC, RS485等/etc
 精度/Accuracy: $\pm 0.5\%FS$ (典型/Typical), $\pm 0.2\%FS$ (可选/Optional)
 电气连接/Electrical Connection: 缆塞(壳体内带接线端子)/Cable Entry
 过程连接/Process Connection: 螺纹、卡盘或法兰/Screw Thread、Tri-clamp or Flange

性能指标 Performance



HTM208隔爆型温度变送器/HTM208 Explosion-proof Temperature Transmitter

测温范围/Temperature Range: -200~500°C
 防爆标志/Explosion-proof Mark: Ex db IIC T6 Gb; Ex tb IIIC T80°C Db
 测温元件/Measuring Element: PT100
 供电/Supply: 24VDC
 输出/Output: 4~20mADC, 0~10VDC, RS485等/etc
 精度/Accuracy: $\pm 0.5\%FS$ (典型/Typical), $\pm 0.2\%FS$ (可选/Optional)
 电气连接/Electrical Connection: 缆塞(壳体内带接线端子)/Cable Entry
 过程连接/Process Connection: 螺纹、卡盘或法兰/Screw Thread、Tri-Clamp or Flange



HTM228防护型温度变送器/HTM228 Protective Temperature Transmitter

测温范围/Temperature Range: -200~500°C
 测温元件/Measuring Element: PT100
 供电/Supply: 24VDC
 输出/Output: 4~20mADC
 精度/Accuracy: $\pm 0.5\%FS$ (典型/Typical), $\pm 0.2\%FS$ (可选/Optional)
 电气连接/Electrical Connection: 缆塞(壳体内带接线端子)/Cable Entry
 过程连接/Process Connection: M20×1.5, G1/2等/etc
 探杆材料/Probe Material: 304、316L



HTM708卫生型温度变送器/HTM708 Sanitary Temperature Transmitter

测温范围/Temperature Range: -200~500°C
 测温元件/Measuring Element: PT100
 供电/Supply: 24VDC
 输出/Output: 4~20mADC, 0~10VDC, RS485等/etc
 精度/Accuracy: $\pm 0.5\%FS$ (典型/Typical), $\pm 0.2\%FS$ (可选/Optional)
 电气连接/Electrical Connection: M12×1
 过程连接/Process Connection: 卡盘/Tri-Clamp $\Phi 50.5$, 卡盘/Tri-Clamp $\Phi 64$
 探杆材料/Probe Material: 316L



HTM5100温度开关/HTM5100 Temperature Switch

测温范围/Temperature Range: -200~500°C
 测温元件/Measuring Element: PT100
 供电/Supply: 24VDC
 输出/Output: 4~20mADC, 1路继电器/One Way Relay, 2路NPN/PNP/Two Way NPN/PNP
 精度/Accuracy: $\pm 0.5\%FS$ (典型/Typical), $\pm 0.2\%FS$ (可选/Optional)
 电气连接/Electrical Connection: M12×1
 过程连接/Process Connection: 螺纹、卡盘或法兰/Screw Thread、Tri-clamp or Flange
 探杆材料/Probe Material: 304、316L



HTM560/HTM560J温度开关/HTM560/HTM560J Temperature Switch

测温范围/Temperature Range: -200~500°C
 测温元件/Measuring Element: PT100
 供电/Supply: 24VDC
 输出/Output: 4~20mADC, 2路继电器/Two Way Relay, 2路NPN/PNP/Two Way NPN/PNP
 精度/Accuracy: $\pm 0.5\%FS$ (典型/Typical), $\pm 0.2\%FS$ (可选/Optional)
 电气连接/Electrical Connection: M12×1, 赫斯曼/DIN43650, 航插/Aviation Plug Connector
 过程连接/Process Connection: 螺纹、卡盘或法兰/Screw Thread、Tri-clamp or Flange
 探杆材料/Probe Material: 304、316L

性能指标 Performance



HWM11型微波物位开关/HWM11 Microwave Level Switch

供电电源/Supply Voltage: 12~30VDC
 介质温度/Medium Temperature: -10~115°C
 开关类型/Switch Type: PNP/NPN
 材料/Material: 316L(外壳/Housing), PEEK(传感器罩/Sensor Cover)
 电气连接/Electrical Connection: M12×1
 过程连接/Process Connection: G1/2
 最高耐压/Endurance Pressure: 100bar



HWM200电容式物位开关/HWM200 Capacitive Level Switch

供电电源/Supply Voltage: 12~30VDC
 介质温度/Medium Temperature: -40~100°C
 开关类型/Switch Type: 继电器/Relay
 探杆材料/Probe Material: 304或PTFE
 电气连接/Electrical Connection: 缆塞(壳体内带接线端子)/Cable Entry
 过程连接/Process Connection: 螺纹、卡盘或法兰/Screw Thread、Tri-Clamp or Flange
 最高耐压/Endurance Pressure: 10bar



HWM280射频导纳开关/HWM280 RF Admittance Switch

供电电源/Supply Voltage: 24VDC或220VAC
 介质温度/Medium Temperature: -40~130°C
 开关类型/Switch Type: 继电器/Relay
 探杆材料/Probe Material: 304+PTFE
 电气连接/Electrical Connection: 缆塞(壳体内带接线端子)/Cable Entry
 过程连接/Process Connection: 螺纹、卡盘或法兰/Screw Thread、Tri-Clamp or Flange
 最高耐压/Endurance Pressure: 20bar



HWU31一体化超声波物位计/HWU31 Integrated Ultrasonic Level Meter

量程范围/Range: 0~0.25m~30m(液体/Liquid)
 精度/Accuracy: ±0.2%FS
 工作温度/Working Temperature: -40~70°C
 供电电源/Supply Voltage: 24VDC
 输出信号/Output Signal: 4~20mADC, HART
 过程连接/Process Connection: G2A, Flange, etc



HWU32分体式超声波物位计/HWU32 Split Ultrasonic Level Meter

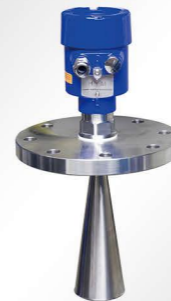
量程范围/Range: 0~0.25m~40m(液体/Liquid)
 精度/Accuracy: ±0.2%FS
 工作温度/Working Temperature: -40~70°C
 供电电源/Supply Voltage: 24VDC, 220VAC
 输出信号/Output Signal: 4~20mADC, HART, RS485
 过程连接/Process Connection: G2A, Flange, etc

性能指标 Performance



HWM500调频80G雷达物位计/HWM500 80G Radar Level Meter

发射频率/Transmission Frequency: 76G~81GHz
 天线形式/Antenna Form: 透镜/Lens
 测量范围/Measuring Range: 0.08~120m
 精度/Accuracy: ±1mm
 供电电源/Supply Voltage: 24VDC, 220VAC
 输出信号/Output Signal: 4~20mADC, HART, RS485
 介质温度/Medium Temperature: -30~80°C(典型/Typical), -30~200°C(可选/Optional)
 过程连接/Process Connection: 螺纹、卡盘或法兰/Screw Thread、Tri-Clamp or Flange
 最高耐压/Endurance Pressure: 0.3MPa(典型/Typical), 1.8MPa(可选/Optional)



HWM510高频26G雷达物位计/HWM510 26G Radar Level Meter

发射频率/Transmission Frequency: 26GHz
 测量范围/Measuring Range: 10m, 20m, 30m, 35m, 40m, 80m
 精度/Accuracy: ±0.1%FS
 供电电源/Supply Voltage: 24VDC, 220VAC
 输出信号/Output Signal: 4~20mADC, HART, RS485
 介质温度/Medium Temperature: -30~80°C(典型/Typical), -30~150°C(可选/Optional), -30~260°C(可选/Optional)
 过程连接/Process Connection: 螺纹、卡盘或法兰/Screw Thread、Tri-Clamp or Flange
 最高耐压/Endurance Pressure: 0.3MPa(典型/Typical), 2MPa(可选/Optional), 4MPa(可选/Optional)



HWM520导波雷达物位计/HWM520 Guided Wave Radar Level Meter

发射频率/Transmission Frequency: 1.8GHz
 测量范围/Measuring Range: 6m, 15m, 30m
 精度/Accuracy: ±1mm
 供电电源/Supply Voltage: 24VDC, 220VAC
 输出信号/Output Signal: 4~20mADC, HART, RS485
 介质温度/Medium Temperature: -30~80°C(典型/Typical), -30~150°C(可选/Optional), -30~260°C(可选/Optional)
 过程连接/Process Connection: 螺纹、卡盘或法兰/Screw Thread、Tri-Clamp or Flange
 最高耐压/Endurance Pressure: 0.3MPa(典型/Typical), 2MPa(可选/Optional), 4MPa(可选/Optional)



HWM600阻旋料位开关/HWM600 Anti Rotation Level Switch

供电电源/Supply Voltage: 24VDC或220VAC
 介质温度/Medium Temperature: -40~80°C
 开关类型/Switch Type: 继电器/Relay
 探头材料/Probe Material: 304或316L
 电气连接/Electrical Connection: 缆塞(壳体内带接线端子)/Cable Entry
 过程连接/Process Connection: 螺纹、卡盘或法兰/Screw Thread、Tri-Clamp or Flange
 最高耐压/Endurance Pressure: 常压/Atmospheric Pressure
 叶片形式/Blade Form: 镰刀形/Sickle Shape, 铲形/Shovel Shape, L形/L Shape 等/etc



HYM610型音叉开关/HYM610 Tuning Fork Switch

供电电源/Supply Voltage: 24VDC或220VAC
 介质温度/Medium Temperature: -40~130°C
 开关类型/Switch Type: 继电器/Relay
 叉体材料/Fork Material: 304或316L
 电气连接/Electrical Connection: 缆塞(壳体内带接线端子)/Cable Entry
 过程连接/Process Connection: 螺纹、卡盘或法兰/Screw Thread、Tri-Clamp or Flange
 最高耐压/Endurance Pressure: 20bar

性能指标 Performance



HWM12微波物位开关/HWM12 Microwave Level Switch

供电电源/Supply Voltage: 24VDC
 介质温度/Medium Temperature: -10~110°C
 开关类型/Switch Type: PNP/NPN
 材料/Material: 316L(外壳/Shell), PEEK(传感器罩/Sensor Cover)
 电气连接/Electrical Connection: M12×1接插/plug, M16×1.5格兰头/Gland
 过程连接/Process Connection: G1/2, M12×1.5, etc
 最高耐压/Endurance Pressure: 40bar



HYM810浮球型连续式液位计/HYM810 Float Ball Continuous Level Gauge

测量范围/Measuring Range: 0~150mm~6000mm
 精度/Accuracy: ±6.35mm, ±12.7mm
 供电电源/Supply Voltage: 24VDC
 输出信号/Output Signal: 4~20mADC
 介质温度/Medium Temperature: -40~120°C
 过程连接/Process Connection: 螺纹、卡盘或法兰/Screw Thread, Tri-clamp or Flange
 接液材质/Material: 304, 316L, PVDF, PP等/etc



HYM850侧装式浮球液位开关/HYM850 Side Mounted Float Level Switch

输出信号/Output Signal: 继电器/Relay
 介质温度/Medium Temperature: -40~120°C
 过程连接/Process Connection: 螺纹、卡盘或法兰/Screw Thread, Tri-Clamp or Flange
 接液材质/Material: 304, 316L, PVDF, PP等/etc
 最高耐压/Endurance Pressure: 30bar



HYM-UZ磁翻板液位计/HYM-UZ Magnetic Flap Level Gauge

测量范围/Measuring Range: 0~200mm~10000mm
 精度/Accuracy: ±10mm
 介质温度/Medium Temperature: -150~400°C
 过程连接/Process Connection: 法兰或卡盘/Flange or Tri-Clamp
 接液材质/Material: 304, 316L, PTFE等/etc
 最高耐压/Endurance Pressure: 10MPa



HYM880型磁性液位变送器/HYM880 magnetic liquid level transmitter

测量范围/Measuring Range: 0~200mm~5000mm
 精度/Accuracy: ±10mm(典型/Typical), ±5mm(可选/Optional)
 供电电源/Supply Voltage: 24VDC
 输出信号/Output Signal: 4~20mADC, 4~20mADC+HART, RS485
 安装方式/Mounting Type: 捆绑式/Bundled
 材质/Material: 304(探杆/Probe), 铝合金6061(接线盒/Shell)
 防护等级/Protection Grade: IP65

性能指标 Performance



HA1N单轴加速度传感器/HA1N Single Axis Acceleration Sensor

测量范围(峰值)/Measuring Range(Peak Value): ±50g
 灵敏度(25°C)/Sensitivity: 100mv/g(160HZ)
 频率响应(±10%)/Frequency Response(±10%): 1~9,000Hz
 激励电压/Driving Voltage: 18VDC~28VDC(恒流源Constant-Current Source)
 工作温度/Operating Temperature: -40~+120°C
 壳体材料/Body Material: SUS 304
 输出方式/Output Mode: 5/8-24(二芯插座Two Core Socket)



HA3N三轴加速度传感器/HA3N Triaxial Acceleration Sensor

测量范围(峰值)/Measuring Range(Peak Value): ±50g
 灵敏度(25°C)/Sensitivity: 100mv/g(160HZ)
 频率响应(±10%)/Frequency Response(±10%): 1~4,000Hz(±10%)
 激励电压/Driving Voltage: 18VDC~28VDC(恒流源Constant-Current Source)
 工作温度/Operating Temperature: -40~+120°C
 壳体材料/Body Material: 钛合金 Titanium Alloy
 输出方式/Output Mode: M12*1(四芯插座Four Core Socket)



HA3M微型三轴加速度传感器/HA3M Miniature Triaxial Acceleration Sensor

测量范围(峰值)/Measuring Range(Peak Value): ±500g
 轴向灵敏度(25°C)±5%/Sensitivity(25°C)(±5%): 10mV/g(160Hz)
 频率响应(±10%)/Frequency Response(±10%): 1~5,000Hz
 激励电压/Driving Voltage: 18VDC~28VDC(恒流源Constant-Current Source)
 工作温度/Operating Temperature: -40~+120°C
 壳体材料/Body Material: SUS 304
 输出方式/Output Mode: 1/4-28(四芯Four core)
 重量/Weight: 8.5g



HS3C三轴振动速度传感器/HS3C Triaxial Velocity Sensor

测量范围(峰值)/Measuring Range(Peak Value): 0~20mm/sec
 电流输出/Output: 4~20mADC
 频率响应/Frequency Response: 5~1,000Hz(±1dB)
 供电电压/Power Supply: 15VDC~30VDC(常用Common 24VDC)
 工作温度/Operating Temperature: -40°C~+85°C
 壳体材料/Body Material: SUS 304
 输出方式/Output Mode: 5/8-24(四芯插座Four Core Socket)



HS1V 单轴振动速度传感器/HS1V Single Axis Velocity Sensor

测量范围(峰值)/Measuring Range(Peak Value): ±1270 mm/s
 灵敏度(25°C)(±5%)/Sensitivity(25°C)(±5%): 4.0mv/mm/sec
 频率响应/Frequency Response: 5~1,000Hz(±1dB); 4~4,000Hz(±3dB)
 激励电压/Driving Voltage: 18VDC~28VDC (恒流源Constant-Current Source)
 工作温度/Operating Temperature: -40°C~+85°C
 壳体材料/Body Material: SUS 304
 输出方式/Output Mode: 5/8-24二芯插座 Two Core Socket

性能指标 Performance



HDM1100单回路数字显示控制仪/HDM1100 Single Loop Digital Display Controller

通道个数/Number of Channels: 单通道/Single Channel
 供电电源/Supply Voltage: 220VAC, 24VDC
 输入信号/Input Signal: 万能输入/Universal Input
 输出信号/Output Signal: 4~20mADC等变送输出/Analog Output, 两路报警/Two Way Alarm, RS485
 测量精度/Measuring Accuracy: $\pm 0.3\%FS$
 工作温度/Working Temperature: $-10\sim 50^{\circ}C$
 馈电/Feed: 支持24VDC馈电/Support 24VDC Feed
 尺寸/Size: 160×80mm, 96×96mm, 96×48mm, 72×72mm, 48×48mm等/etc



HDM1300智能温控仪/HDM1300 Intelligent Temperature Controller

通道个数/Number of Channels: 单回路/Single Channel
 供电电源/Supply Voltage: 220VAC, 24VDC
 输入信号/Input Signal: 热电阻、热电偶等/Thermal Resistance, Thermocouple etc
 控制输出/Control Output: 4~20mADC等模拟量输出/Analog Output, 继电器/Relay, 单向可控硅/SCR 等/etc
 报警输出/Alarm: 两路报警/Two Way Alarm
 通讯输出/Communication Output: RS485
 测量精度/Measuring Accuracy: $\pm 0.3\%FS$
 工作温度/Working Temperature: $-10\sim 50^{\circ}C$
 尺寸/Size: 160×80mm, 96×96mm, 96×48mm, 72×72mm, 48×48mm等/etc



HDM5200双回路数字显示控制仪/HDM5200 Dual Loop Digital Display Controller

通道个数/Number of Channels: 双通道/Dual Channel
 供电电源/Supply Voltage: 220VAC, 24VDC
 输入信号/Input Signal: 万能输入/Universal Input
 输出信号/Output Signal: 4~20mADC等变送输出/Analog Output, 四路报警/Four Way Alarm, RS485
 测量精度/Measuring Accuracy: $\pm 0.3\%FS$
 工作温度/Working Temperature: $-10\sim 50^{\circ}C$
 馈电/Feed: 支持24VDC馈电/Support 24VDC Feed
 尺寸/Size: 160×80mm, 96×96mm, 96×48mm, 72×72mm, 48×48mm等/etc



HDM5600流量积算仪/HDM5600 Flow Totalizer

供电电源/Supply Voltage: 220VAC, 24VDC
 输入信号/Input Signal: 万能输入/Universal Input
 变送输出/Transmitting Output: 4~20mADC等模拟量输出/Analog Output
 报警输出/Alarm: 两路报警/Two-way Alarm
 通讯输出/Communication Output: RS485
 测量精度/Measuring Accuracy: $\pm 0.2\%FS$
 工作温度/Working Temperature: $-10\sim 50^{\circ}C$
 尺寸/Size: 160×80mm, 80×160mm, 96×96mm, 96×48mm等/etc



HDM5101数显光柱控制仪/HDM5101 Digital Display Light Column Controller

通道个数/Number of Channels: 单通道/Single Channel
 供电电源/Supply Voltage: 220VAC, 24VDC
 输入信号/Input Signal: 万能输入/Universal Input
 输出信号/Output Signal: 4~20mADC等变送输出/Analog Output, 四路报警/Four Way Alarm, RS485
 测量精度/Measuring Accuracy: $\pm 0.2\%FS$
 工作温度/Working Temperature: $-10\sim 50^{\circ}C$
 馈电/Feed: 支持24VDC馈电/Support 24VDC Feed
 尺寸/Size: 160×80mm, 160×80mm

性能指标 Performance



HP2000差压表/HP2000 Differential Pressure Gauge

量程范围/Pressure Range: 从 $\pm 30Pa$ 到 $\pm 100kPa$ /From $\pm 30Pa$ To $\pm 100kPa$
 测量介质/Measured Medium: 干燥和洁净气体/Dry And Clean Gas
 传感器类型/Sensor Type: 机械式/Mechanical
 精度/Accuracy: $\pm 2\%FS$, $\pm 3\%FS$, $\pm 4\%FS$
 压力接口/Process Connection: NPT1/8内丝/NPT 1/8 Female
 外壳材质/Housing Material: 铸铝/Cast Aluminium
 尺寸/Size: $\Phi 120.65 \times 55.6mm$



HP3000多功能差压表/HP3000 Differential Pressure Gauge

量程范围/Pressure Range: 从 $\pm 30Pa$ 到 $\pm 5kPa$ /From $\pm 30Pa$ To $\pm 5kPa$
 测量介质/Measured Medium: 干燥和洁净气体/Dry And Clean Gas
 传感器类型/Sensor Type: 硅压阻/Silicon Piezoresistive
 精度/Accuracy: $\pm 0.5\%FS$
 供电/Supply: 24VDC
 输出/Output: 4~20mADC, 0~10VDC, Alarm, RS485等/etc
 电气连接/Electrical Connection: 接线端子/Connecting Terminal
 压力接口/Process Connection: 气嘴/Air Nozzle
 尺寸/Size: $\Phi 120 \times 36.7mm$



HHTM210风管式温湿度变送器/HHTM210 Duct Type Temperature And Humidity Transmitter

温度测量范围/Temperature Range: $-20\sim 80^{\circ}C$
 湿度测量范围/Humidity Range: 0~100%RH
 测量介质/Measured Medium: 空气或气体/Air or Gas
 精度/Accuracy: $\pm 0.5^{\circ}C$ (温度/Temperature), $\pm 3\%RH$ (湿度/Humidity)
 供电/Supply: 24VDC
 输出/Output: 4~20mADC, 0~10VDC, RS485等/etc
 电气连接/Electrical Connection: 缆塞(壳体内带接线端子)/Cable Entry



HYM630电极式耐高压型液位开关/HYM630 Electrode Type High Pressure Resistant Liquid Level Switch

测量原理/Measuring Principle: 电极式/Electrode Type
 测量介质/Measured Medium: 导电液体/Conductive Liquid
 供电/Supply: 24VDC
 输出/Output: 继电器开关信号/Relay
 电气连接/Electrical Connection: M12×1, 航插/Aviation Plug Connector
 过程连接/Process Connection: M20×1.5
 介质温度/Medium Temperature: $-43\sim 120^{\circ}C$
 最高耐压/Endurance Pressure: 70MPa



LBT-50M粉尘浓度检测仪/LBT-50M Dust Concentration Detector

量程范围/Pressure Range: 0~50/100/200/1000mg/m³
 粉尘粒径/Dust Size: 0.1 μm ~200 μm
 精度/Accuracy: $\pm 3\%FS$
 供电/Supply: 24VDC
 输出/Output: 4~20mADC
 电气连接/Electrical Connection: 缆塞(壳体内带接线端子)/Cable Entry
 过程连接/Process Connection: M27×2
 管道外径/Pipe OD: 0.3~4m